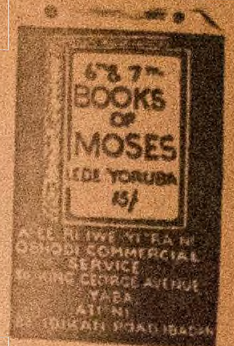


Ogun Ita'ja

E Polowo oja
yin sinu Iwe
Irohin Eleti-
Ofe, Kia L'oja
o ta.



VOL X No. 557. ELETI-OFE LAGOS, SATURDAY, APRIL 12, 1958. KOB0 MBJI (24)

Ibanuje Pelu Ayo Dapomorawon Ni Yaba

YABA. Okunria kan ni a gbo wipe, o n se aisan; o wa te waya ranse si omo re ni Ibadan wipe, akoko to, eleru fe mu eru re, ki o tete yara ma bo ni Eko.

Omo re ti a wi yi, iyawo re loyan sinu, o ti le fere to bimo; sugbon ko fe si iyawo re sile lo sibi kan, o fe ki o bimo alaju on. Nitorina nigbat ti o ni si Eko, o mu iyawo re dani lo.

Bi o ti de Eko o ba baba re npoka iku, o sun mo, o gbe ori re dani, iyawo re mu owo baba na da ni, sugbon baba na ko le soro. Bi baba na ti adake, bani obirin omo re bere si robi nigbat nwon ma si bere si tufu iku baba na, igbe omo ni nwon tun ngbo, omo na si fe okunria.

Bo ri i, aje ekan di syo koun?

OGBENI SODIPO PADA SI EGBE OLOPE

ABEOKUTA. Bi o ti wu ki o pe to daju-daju ododo ni lati bori eke lojo kan iyaleu ni ylo fe fun gbo-gbo 'enja lati gbo wipe Ogbeni I. A. Sodipo ti egbe Alakuko nigboro Abeokuta eati awon egbe N.C.N.N. si ara ti nlu na lo tete fura wipe obun rere kan ko le ti lau egbe N.C.N.C jade wa o si te-ze ju owo sile pe towo tete na ni on si ko sin egbe Afenifere.

Sugbon a gbe wipe ko si ti wipe ylo tun sese se iwe nitoripe tele-tele ki o to bo sinu egbe Alakuko Afenifere ni.

Olori Ile If'owo-pamosi



OGBENI ROY, P. FENTON

Eati a nwo nlu aworan yi ni Ogbeni Roy P. Fenton eati Oloye Okotile-Eboh ti ise Alaboju owo ilu Nigeria (Finance Minister of Nigeria's Federal Government) pe lati wa jo Olori Ile If'owo-pamosi ti ilu Nigeria (Governor of Nigeria's Central Bank).

THE NATIONAL BANK Of Nigeria Limited

Incorporated in Nigeria in 1938
Paid up Capital - £1,130,000

Bankers to the Western Region Government of Nigeria.

HEAD OFFICE

37, MARINA, LAGOS, NIGERIA

22 Branches throughout Nigeria including
IBADAN ABEOKUTA, IJEBU-ODE,
OSHOGBO, OWO, ONDO ILESHA,
ILARO, BENIN-CITY, WARRI,
SAPELE, ABA, KANO, ZARIA, JOS.

LONDON OFFICE

1 THROMMORTON AVENUE, E.C. 2
Manager: F. O. Tyrrell

Telephone: London Wall 4303
Cables & Telegrams: Natbankger, London.

Head Office Representative in London.

Ernest Olabunmi Obasa—Porter

CORRESPONDENTS

NEW YORK PARIS HAMBURG

No. 73/57/Vol IX/662.

Ministry Of Education, Inspectorate Division.

Vacancies For Supervising Teachers

Applications are invited from suitably qualified candidates for appointment to the post of Supervising Teachers Ministry of Education Western Region Ibadan.

SCALE OF SALARY- (C/E) 1,2; £390 x 18 - 492, £540 x 24 - 588; £660, 684; 714;

For further particulars and method of application; please see Western Region of Nigeria Gazette No. 17 Vol. 7 Notice No. 302 of 27th March, 1958.

CLOSING DATE: Overseas Candidates 14/4/58. All other Candidates 20/4/58.

Omoba Kano Di Owo Oyinbo Mu.

Igbagbo Awon Babalawo



Nighati oba Kano Sariki Sanusi fi io silu Oyinbo nijesi fun Itoju oju re ati lehinti o riatafia tan ti o fe pada wa sille Sekiteri agba Lennox Boyd sin won da idi oko. Sugbon nighati omoba kano ti nwon npe aj Baba, gb'awo lowo Sekiteri Agba, ko fe fi oyinbo na sile, o mu danj penpen.

Leti ewe osi: Sariki Sanusi oba Ilu Kano Baba ti o nse omoba Ilu Kano pelu aiutoju re ati Alan Lennox Boyd.

1. Esi-buruku nsalo loju
 Olodumare Olodumare
 ni, e mu, e mu, e mu
 Esi buruku tess mo lin
 o nsalo A ko ri Moja ti
 o le mu u sile l'ode grun
 2. Esiburuku la gbagbo
 won koja tan. O wa ku
 Orunmila nikan sojo
 Orunmila ki mole sikun
 O fa a l' fi le Olodu-
 mare lowo A si fi iya je
 Ayant o rii, Olodumare wi-
 pe ki Orunmila joko ti on
 O ni iwo Orunmila nikan-
 sojo ni ki o ma ri mi ninu
 gbagbo awon irumole.
 Ejlodge
 Awon Babalawo gbagbo
 wipe, Olodumare ni ebo
 pataki kan loto eyiti o iy
 wipe riru ebo nla yi, je
 dogba-dogba ni inawo re
 fun Olodumare ati Orun-
 mila ati wipe ko si eni ti o
 kapa Eju afi entii o ba se
 ife Olodumare.

Olufo nwoyi niye lori
 jojo ninu ipile esin ti aba
 lowo awon baba nja wa
 Iyan nipe nwon ya Olodu-
 mare ati ohun iwa Re kuro
 lara ohunkohun ti lee ohun
 ipile Ede, bakanna ni nwon
 ya Orunmila ati ohun iwa
 re kuro lara ohun ipile Ede.

Niti Olorun ohun gbagbo
 lo ti han fun u wipe a tija
 won Iyan nipe ohunkohun
 ti Olorun ba ti pe loruko
 yala a ti da nkan na tabl
 a kotti da npe ni nkan na
 yio si wa sugbon awa enia
 ko le si ohun kan ti kotti
 si. Ohun Ijinle ala ni ero
 yi lokan awon Babalawo
 ti o ba gbo Ifa de'be sile
 wa. Paapa awon Babalawo
 ko le so ni poto, tant entii
 o koko wa yala Olodumare
 ni tabl Orunmila. Nitori
 lal eyi ni awon Babalawo
 se npe Orunmila al Eleri
 Ipin Ibikeji Olodumare

Lenin Olorun ati Orun
 mila ki ohunkohun miran
 to tun wa ebo kan mba larin
 re dogba-dogba ni inawo
 ebo yi fun Olodumare ati
 Orunmila. Ki enia to le
 rubo ki ebo an si gba je
 Ilaa latl edo Olodumare
 funya Re Enia ko le rodu
 yan ebo fun enia ki o je
 ayafi eyiti Olodumare paapa
 ti se Ilaa re gile ohun ti a
 npe ni ebo ati Sara ni du-
 kta ent ti a na dipo ara gni
 nitori ki oluware te ni
 asani ati alafia.

Elere Idaraya



Okun nnu awon esere ti a gbagbo wipe yio lo ba won se ere Idaraya
 ni Cardiff si entii o nso yi, entii oruko re sje Peter Eleri. A gbo wipa,
 Okunria ti a nwo yi si ero bibe so lse iyana han awon ara Ilu Melbourne nijosi,

Entii a gbo wipe o tun la bo tayo Okunria ara Ilu Nigeria yi ni.
 Okunria kan ara Ilu Amerika ti awon npe ni J. C. Owens un si a gbo wipe
 o fere be ju opojo lo, o ti bibe so ese merindilogbon.

DA EHIN-DIDUN RE DURO

nipa titete mojuto awon eree inu ati apo-ito re

LO

DeWitt's Kidney & Bladder Pills

Ki o si bo lowo awon irora ti o nko e sinu arun

LAKUREGBE,

ARA-RIRO, EHIN-DIDUN ati, Awon IYONU APO-ITO



F1726

L'arin wakati die ni wa a ti Ri ayorisi ise re (Ito a mu awo miran wa)

DeWitt's Kidney & Bladder Pills

Abami Erin Kan Jade Nilu Uganda

Okturin Agogbo kan ri erin nla kan ti o ni ehin mejo, eyiyl je erin abami ti enikan ko ri iru re ri, ko si si ode kan ti o le so wipe bi on ti je ogbo-ju ode to on ri erin kan ti o ni tayo ehin meji ri.

Erin na nighali nwa pe ni egbe otua re ehin kan sose li o wa nibe o si won iwon merin (4 cwt 3 qrs 2 lbs) sugbon ni egbe o osi ehin meje lo wa ni oju kaana okokan nisa ehin na won 12 lbs.

Iru awon erin bawoyit sowon gidigidi nile Afrika.

eje ni nkan na ti nri be wa ni tabi lehia ti a ti bi won tan. Elomitan, a bimo, omu na yio yo iru sidi, omiran yio bi eless pepelya, omiran yio bi omu olowo meti tabi eless merin, ohun ti o fa ti eyi si nibe a ko le so boys ewe alogunba ni. Oju awon Onisegun nri emimo, nse ni awon ko gbojo ma so bi onwo ba si wipe ki awon so ewu won ko le gba tan.

Ijoba Sede Nigbero Ibadan

Nitori jagidi-jagan ti awon ara Ibadan dawole larapa Iku Alhadji Adegoke Adelabu oyo awon enla le ti gba lga di ero orun awon je dukia awon elomitan awon ba awon nkan meremero ti elomitan ja. Nigbadi aseju nse wo awon onjagidi-jagan nwon-yi loran nitoripe Ijoba gba won laye di ni Ijoba ba ko awon olopa s'ode. Sugbon awon enla na so pe taal nle olopa nitoripe awon si owo gbendere mu won.

Ijoba se ofin wipe ki olukuluko won lo so agbeje mod (Emergency) kaka ki jagidi-jagan na role, nse lo tunbo nle siwaju nigbani ni Ijoba ba tun se ofin leede. Oro na wa di Ajalo-arungbe ki olomo so omo re moje.

Lailga yi lo ni apa awon Omija-adi na ti role, Owo Ijoba ti te awon ti nwon fi sun esun Ibania ati awon ti o ada ruke-rudo sile ni Ibadan.

Akiyesi Pataki

A ti eyi kede fun gbogbo enyia Asoju Iwe Irohila wa nile Yoruba. P'oke Oya, nile Ibo, P'oke Okun a ti nifu Oyindo wipe enikeal ti ko ba fi owo wa ranse ki osu to pari so ko orako re fun Laysa Eleti-Ofe, ao ba se ejo so si gba owo Iria ese lowo re.

OLOTU.

No. 23/363

For Public Information Income Tax Law (No. W. R. 16 of 1957):

I wish to remind all persons who received their Regional Income Tax Assessment Notices by 31st January, 1958, that they must complete payment not later than 31st March, 1958. This applies both to persons who have already paid half their tax within two months of receiving their Assessment Notices and who are now due to pay the balance and to those who have not yet paid anything.

2. If any of these persons fail to complete payment in time, legal action may be taken against them. Some persons have already incurred penalties for not paying at least half their tax within two months of receiving their Assessment Notices and they have received Demand Notes accordingly. I remind them that the total demanded must be paid within 30 days of receipt of the Demand Note.

3. I have power to grant extensions of time to individuals but I shall only do so where very good cause is shown.

I. F. W. SCHOFIELD
Commissioner of Inland Revenue,
Western Region.

Ibadan,
21st March, 1958.

ITAN ILE KETU

Nigbati Deji olori awon Olopa gbe eru na, o fe taal jade ni eru ojo na kuro nile Ketu, sugbon Eju Lelu, ankan gba oas kankan koje ki o bo sohin ad ti ti awon enla fi de wa ha ledq Eju na.

Omo Abami Po -L'aiye.

Orisirisi awon omo abami ni awon enla mbi ni ode ti oni, ko si nse wipe lara enla nikangoso ni nkan abami yi ti ase; bani o ase lara pranko palu.

Nigbani isbi nigba atijo Iru re sowon pupo ldi re nipe Isaliko na, agbara-kaka ni nwon fi mbi omo ti o po to ogoran nlu Eko, sagbon lede tout awon mbi Iruwo (400) omo Iurin Iru Eko si qe kan.

Nilu Kanada, ogoran omo ni awon mbi ni wakali mejl - mejl. Bi nwon ti mbimo yi to, algbamtras nwon a bi omo ti ori re pe, awon a si bi eyiti ori re ko pe.

Ohun ti o nfa sababi ti awon nkan na si nje be ni wipe yala lad Iru

ELETI O FE

A-NJU-WQW KO SB WI L'BJQ

EDITORIAL OFFICE & WORKS CABLES & TELEGRAM

28, Kosoko Street, Lagos

"ELBTI - O FE LAGOS"

P. O. Box 467

Phone 23370

VOL. X. NO. 567, LAGOS, SATURDAY APRIL 12, 1958.

Èku Ewu Odun Ajinde

A fi wosika wa ose yi ki awon ore wa awon Ont-ghabgo elein igbagbo ti Jesu ku ewu odun Ajinde ti nwon so ni ojo Monday ose yi. Ibi-Tire ni abi omo enia sinu aye igba ibanuje ati inu-didun wahala ati isami ekun ati ayo bo gege ni oro ti Jesu Kristi Olugbala aralye je. Bi yeparipa ti je aro Ikanna beni Hallelulah je iho ayo ol ekun pe di ale kan kiyesi ayo mbo wa li owuro.

Afi eyi pasamo oro ni altoripe oro po lori edebe ati ayaba Jesu Kristi l'ede aye gegebi Iwe Mimò Bibeli ti fi ye wa lhu oro die ni a fe so nipa lbi Jesu lati fi k'ara kun arisiki kiki awon ore wa ku ewu odun Ajinde.

O ti le-legba s odun ti a bi Jesu si Beahlehem llo Judia ni l'buje erag lais aniant Maria afesona aya Joseph ni iya re Bibeli si ko si wipe Esi-mimo ni afi l'oyun re Alakuragi si jeri si eyi.

Bi a ba so akiyesi igba igbesi aye Jesu, so mo dsju-daju wipe tibi-tire ni abi omo enia s'ode aye al-toripe ni ojo kan si nwon nbo iho ayo Hosannah Hosannah fun omo Davidi sugbon ni ojo kafa si a tun agbe Crucify him kan mo agbelebu kan mo agbelebu Enu won l'ofa enu won l'oje, Aduro l'ayi.

Èku ewu odun Ajinde.

A Nfe Asoju

A nfe Asoju fun Iwe Irohin wa Eleti-Ofe l' kun awon Asoju wa si awon ilu ti a daruko si la- le wonyi-

Abeokuta, Ijebu-Ode, Ijebu-Igbo, Ie-Ife, Osh- gbo, ati Port Harcourt.

E kowe si Olotu Iwe Irohin Eleti-Ofe Kosoko St, Lagos.

Imoran Fun Enyin Abiyamo

Enyin abiyamo e wa ra OMORELA o dara pupo fun awon omode.

Ama je ki omode ri orun sun daradara o dara fun otutu, lko ati orisirisi arun miran ti o ma mba omode ja ni asiko chin. Opolopo abiyamo lo ti lo esbogi yi fun omo won ti won si so wipe o dara pupo fun awon omode

OMORELA BABY MIXTURE

(Sile Moji Abi 2/6d Fun Igo Kan)

O wa Lodo

COMMERCIAL MEDICINE STORES (Qualified Chemists)

10, VICTORIA STREET, LAGOS.

Igbesi Aiye Oloye Pearse



Eniti a nwo niuu aworan yi ni Ologba Samuel Herbert Pearse, F. R. G. S. o je omo ti Alufa Eni-owo Samuel Pearse Ologba bi, pupo awon enia lo npe ni Awobo.

Nigba ewa re, o ko eko lwa ni C. M. S. Grammar School lati 1879 si 1883. Ose tes akowe labe Y. A. Williams. Lehin na, on pelu Ogbeni Thompson illo nse owo po, nigbana ni nwon ape e ni Pearse ati Thompson

Lodun 1915 ni ijaba yan si igbimo Asofin algbati nwon nda'wo ogun ko nse owo die lo da. O je okan ninu awon igbimo lje Agikan ti Eko. On ni Alakoso llo itewe Awobo Press.

Ni odun 1923 ijaba yan gegebi asoju ilu egba sinu igbimo Asofin. On ni olotoju Glover Memorial Hall ni Ehinbeti Ijaba yan pelu awon ti o lo soro ile silu Oyojobo, Irohin kan wa wipe, o so igbimo ninu ede Gesi ni odun 1913.

Oloye S. H. Pearse je alapara ati oluyaya enia si- gba aye re. On lo ko ile ala Eleria to wa ni Oke Olowogbowe, on lo si tun ni ile itewe ti nwon ape si Awobo Press. On lo si koko to iwe Irohin ti o si Ogun Igbala.

Plushes, Velvets, Velveteen, Damasks & Building Materials

PLEASE CONSULT

Okunowo Brothers

63 Massey Street, (Faji Market)

LAGOS NIGERIA

The house where Courtesy & Satisfaction are Guaranteed

Anobi Adamo Lo Ko-ko Sise Agbe

Awon eya kan wa ni apa ile South Afrika ti nwon npe ni Ofon (Afghanistan) awon eya yi ko mo ise mejji a yafi ise Agbe. Idi re ti awon ara ilu yi se je kiki agbe ni wipe, nisebati Olorun lo Anobi Adamo kuro ninu ogba Edeni ni ile oke kan ti awon npe ni Sar Andalp lo gbe wa fise ibujoko si.

Ibiti a npe ni oruko yi je ile ibiti efusu ile kan ti awon Oyibo npe ni Cyclone ti ma mbera.

Nwon so pe nigbati Adamo de ibiti a daruko yi, ise agbe lo bere si se itil to si se awon ara ile Ofon sile, ise agbe yi gwa ni awon ba lowo Adamo baha nia wa.

Ilu Ofon ti a wi yi je ile awon eala dudu awon si po bi omi sugbon idameta awon ara ilu na ise agbe ni awon nse tisi di omi olomi.

Ogun ja O Mu Onifere

Ninu ogun kan ti Gesi ja pelu awon ota, nwon ri Onifere kan mu loju ogun Onifere na wa mbe won pe ki nwon jowo fi on sile nitoripe on ko npa enia, on ko si ngbe ibon, fere nikan soso ni on afun.

Awon Gesi dahun pe beni nitori fere na lo jeki awon se pao nitoripe iwo lo nfi fere yi won lori ti nwon se npa wa.



E Ma Ka Iwe Irohin Eleti-Ofe Ki E Si Ma Polowo Oja Yin Sina Re.

Kere o!

Ati ni orisirisi ogun German to se se de, fun oiguru aisan tokunrin obinrin. Tete wa ni dreg a'o to tan.

**J. A. AJAO
BROTHERS**

**MEDICINE STORES
7, Egerton Road, Lagos.**

The Co-operative Union of Western Nigeria Limited invite people of all walks of life to improve their own condition and raise their status by forming themselves into Co-operative Societies. Those already in existence are Producers' Co-operatives, Salary Earners, Tailors, Leather Workers, Wood-Workers, Exporters, Bank, Trading Co-operatives and a host of others. You too can co-operate and so enjoy life more abundant in the Co-operative Movement. For full particulars, consult the Assistant Registrar of Co-operative Societies in your Province, or The Secretary, Co-operative Union of Western Nigeria Limited, Co-operative Buildings, New Court Road, Ibadan with branches in Abeokuta, Badagry, Benin/Delta, Ijebu, Ikeja, Ilaro, Ilesha and Ondo.



Issued by the Western Nigerian Information Services



Itan Onigbo Gbagbo

Olo pe ti Baba Onigbo-
gbagbo ti ma nkilo fun
wipe ki o mase nkan da
wo igbo lo, ki o ma ba
pade Gbohun-gbohun.

O bete pe kint ohun ti
gbohun nse fun enia?
Baba re dahun pe, yio koke
ma wa enia ni ifa dledie
vlo ma sunmo enia, a si fi
kumo re lu enia pa.

Lojo kan Onigbo-gbagbo
lo si oko igb. o si ri awon
kokoro mejl ti o mba ara
won ja. erin pa
O wipe O gbete o! Ewu
ya a lati gbo ti eukan da-
hun pe "Gbete o", Eyi al
oro ti awon bara won so
Onigbo - Iwo tsai yen?
Gbohun - tani yen
Onigbo - kint Oruko re?
Gbohun - Ruko re
Onigbo - Iwo ma go o
Gbohun - G o.

Iru oro bayi a ma bi
Onigbo ninu o nte swareju
lati lo ba eni na ja sugbon
o wa tsai pe Baba re ti
so fun pe nigbati o ba se
ti Oluwa re ko gbo ohun
gbohun-gbohun mo, nse ni
o lo luge de oluwere.

Nitorina, nigbati Onigbo-
gbagbo ko gbute Gbohun-
gbohun mo eru ba a ki o
ma ba luge de soju ona
de on.

O sare pada selia, o si
koti si ona ile. Bi o ti
alo pade baba re loju ona.
Baba - Kiloje ti off asare
bo bayi?

Onigbo - Emi pelu okunrin
kan lo ti ljo mbe ara wa
alau igbo.

Baba - Se ko nge iwo
pelu gbohun - gbohun

Onigbo - Emi ko mo sugbon
bi mo ba bu on na o si
bu mi san nigbati mo se lo
baja ni nko gburo re mo.
Baba yera ma sare lo alle
mase leri o ba o loju ona.
Gbohun gbohun ni.

Nigbati Onigbo gbagbo
dele, ko lo jade titi ile fi
su Nigbati Baba re pada
dele iya re bere pe ese ti
ti o ti Gbohun gbohun deru
na Onigbo be yen? Baba
si fi owe yi dahun pe
mo ti o ba ni Onigbo
"o je ologbon omo".

Osanyin Ati Ifa

Nigbati akatakiti bere larin Orisa Osanyin ati Ifa,
ko si Mole kan ti o ni ohun si oro na. Awon mejeji
nse ope-alaiye lori tani agba. Odu merindinlogun ni
ifa nlo merindinlogun ni on na paapa nlo kini Ifa
ri, ti emi Osanyin ko ri.

Ifa dahun O wi fun pe o dara, ngo fi han o wipe kete
ko nse awo

Igbadun wa ninu

Oti Heineken's

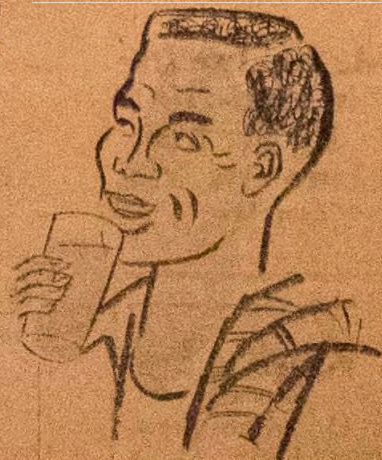


Orutu O mo, Oti Heineken
ko si nkan to dara julo!
Oti Heineken dara fun
ara, O kun fun igbadun
ati orun didun daradara!
Oti Heineken Yio fun o
ni alafia tiri di aru
jokeji tabi tube lo!



Heineken ti Holland

O le ni oduntun odun
to o ti wa



Orun didun pelu agbara lo so

Oti Heineken's

di oja gbogbo awon oti

No. 73/S.2/Vol.IX/662

Government Teacher Training College Abraka

The entrance examination to the above College will be held on Saturday, 9th August, 1958, at centres in Warri, Benin Abraka and elsewhere as may be necessary.

Two classes will be admitted for the two year Grade II Certificate Course.

Letters requesting application forms must reach the Principal before 31st May. All applications must be submitted through sponsors. Private Candidates will not be admitted.

Only Grade III teachers in at least the second year of certificated service, or School Certificate holders or pupils in the final year of a Secondary Grammar School course are eligible.

Before admission, successful candidates will be required to produce proof that they have signed an Agreement with an Employer to teach in Schools in the Western Region on completion of the course.

(Western Region of Nigeria Gazette No. 17 Vol 7 Notice No 295 of 27th March 1958.

No. 23/Vol. 111/369

Public Notice Payment Of Tax By Money Orders

With effect from 1st April, 1958, the charges on Money Orders used for payment of Western Region Income Tax will be met by Government.

2. An individual taxpayer who wishes to remit his tax by Money Order to an Income Tax Office will be issued with a Money Order free of commission charges if he produces to the issuing Post Office Official his Assessment Notice or Demand Note. If the amount shown on an Assessment notice may be paid in 2 instalments a Money Order for half the amount due may be obtained. The amount shown on a Demand Note must be paid in full. The Money Order will be payable only to the Commissioner of Inland Revenue at the station from which the Assessment Notice or Demand Note was issued.

3. An employer who is making deduction from staff salaries may similarly obtain such money orders if he produces at the post office the Tax Form 7.

4. The maximum for which an Inland money order can be issued is £50, so if the amount of tax is greater than that more than one money order will be required.

5. All such money orders must be crossed for payment only through a Bank.

6. Postal orders will NOT be issued free of postage.

(Sgd) L. F. W. SCHOFIELD
Commissioner of Inland Revenue,
Western Region.

ARADAN NERVIGORA

Ogun eje pataki fun imarale agba ati aremo pipe fun awon alaya pupo. O dara fun inarun, eje dudu, isokun oju, gbigbon owo, ailesun, ailokun ninu ati irufe arun bawonni. O je ajidewe fun awon ti agbara won ndinku. On na gan ni okunrin yi lo ti o fi di "Afeke kun bi ojo." 5/6d. pere pelu owo oko 1/6d s.g. 7/- Post Free.

The Egba Trading Aradan Stores
112, Denton Street, 18, Denton Bridge
Street, P. O.ox 2, Ebute - Metta.
Phone 44153. A tun yi ni New Motor
Park (Ojupa) Ibadan.

Akiyesi

Lose ti o wabo, e o gbo itan ohun
to sele nibi aisun oku iya Oduduwa.

Awon Ara Ojoku Binnu Filu Sile

ILORIN. Agbo Irohins wipe awon ara ilu Ojoku, Ikotun, Ologbodoroko ati ilu Afon binu ko eru won jade kuro nilu lati ma lo gbe igboro ilu Ilorin. Kilofa?

Ohun ti a gho pe o fa sababi yi ni wipe Malam Salawu Falaal ti o ti nge olori won ti ti o si wa se asemase ninu oju Kerestimesi ti esi, eyi ti o di ohun ti ijoba ibile fi ni lati bawi.

Akanbi Ologbodoroko so wipe, awon ti kowe titi si ijoba ile Hausa wipe, ninu kuro ti ijoba ibile mu Salami kuro je didun fnu awon, nge ni ara de won, nigbati ijoba fe da pada, awon tak o o, sugbon ijoba ko festi.

Sugbon ijoba fi karen gida le pe ylo pada, dandun, bi o ba fi je be bi ko ba le fi ilu sile fun wa, awa yio kuku filu sile ki gbagbo wa jijo ma gbe igboro Ilorin.

ISE PANA PANA
YIO BERE



Eniti a nwo nina aworan yi ni Olufa Antony Eas-horo ti ijoba Iwo Orun a gho wipe on lo se atona ti ijoba Iwo-Orun se fi £3 700 lele lati fi da ise awon pana-pana aile ollu Ibadan.

A gho wipe bi o ba ye ni ilu Eko nikansoso ko si si ilu kan ti o tun ni ogise awon pana-pana. Ni odus tokeja nibe Ibadan nikan iye dukia ti ina bang danu lowo awon eniti bi a ba giro se ylo tayo egbarun Pona.

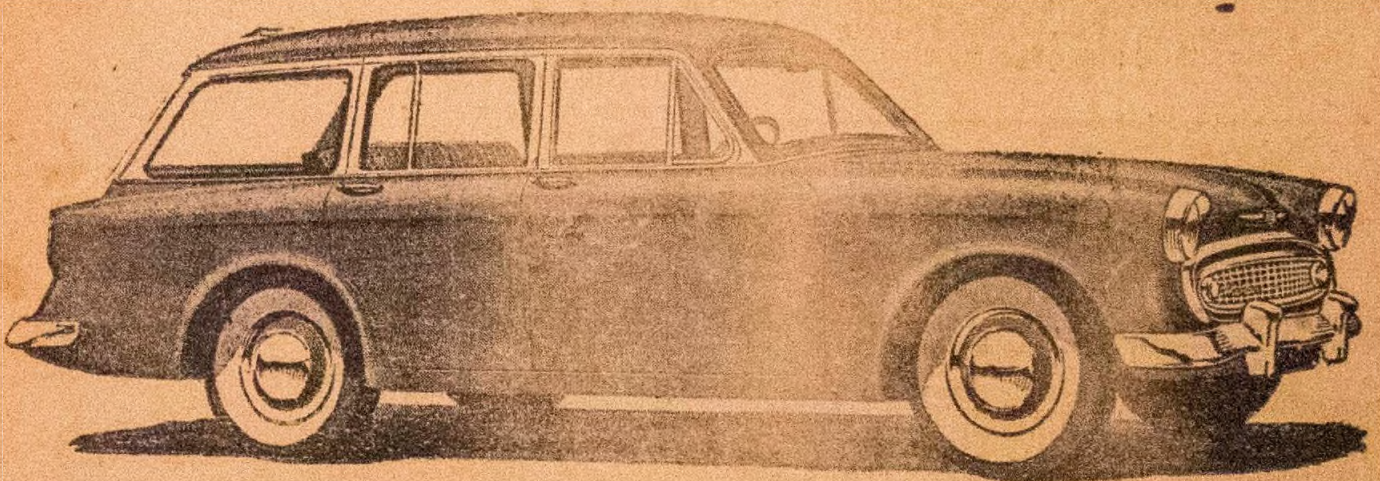
Eto yi je okan eyiti yio wa fun odun 1958-59. Owo yio a ran o.

New
Phone
number
20187
5 lines

WEST AFRICA
TELEPHONE

Awa ni Oja Apalowo
gja fun tia ti o ni mu
sil oye bi a ti npolowo
gja ninu iwe trobia tabi
ninu Sotima tabi bi a ti
npolowo larin iju.
A sira ni Eko, Kano, Ibadan, Accra,
Soko, ati ni Oyo.

Go in for Hillman economy and proved reliability



HILLMAN STATION WAGON

PRICE EX-LAGOS £785
PRICE EX-U.K. £625

Subject to discount

YOU RELAX AT THE WHEEL OF A HILLMAN--and enjoy a wonderfully comfortable journey--however far you travel. *Everyone* is comfortable in a Hillman--*all the way*. You get ample headroom, leg-room and seat-space in a Hillman--and the smoothest ride, well-designed suspension can give. And when you drive in Hillman comfort you also get the benefit of Hillman performance, economy and proved reliability!



HILLMAN MINX
DE LUXE SALOON

PRICE EX-LAGOS £676
PRICE EX-U.K. £529

Subject to discount



HILLMAN MINX CONVERTIBLE

PRICE EX-LAGOS £735
PRICE EX-U.K. £598

Subject to discount

HILLMAN

for comfort

A ROOTED PRODUCT

ARAB BROS MOTORS LIMITED

P.O. BOX 414
LAGOS.

52-54 DENTON STREET, EBUTE METTA.
IBADAN • KANO • JOS • ENUGU • ABA • PORT HARCOURT

TELEPHONE
44011