

Owe

KITA-KITA
KOMO TI
ARISIKI, KI
A7SISE BI
ERU KODA
MKAN

ELETI OFE

A-NJU-WON KO SE WI LEJO

Asoje

INA BI
IY. KOSI
TATI JE
S'OMO
OLOMO
LORE

XIII No 800 LAGOS SATURDAY OCTOBER 14, - OCTOBER 20, 1961. KỌỌ MEEI (2D)

AGBAKO ORI-EDE! JAMBA MOTO SELE, ABOYUN MEJI R'ORUN AIROTELE.

Ni ilu Abo, ni ipinle Ila-Orun ni jamba moto ak'ero kan ti sele ni ojo Alami si oje yi nigbati owo moto ak'ero na ju ti o ya bara lo rolu awon ero oja ti o wa ninu oja, hin ilu Abo ti o lo pa awon obirin meji, ti meji je aboyun moju-ko moju ninu wun.

Bekanna ni jamba moto sele ni ipinle Ila-Orun ni ojo Alaraba, a gbo wpe enia mejo ku Lambam ni-ssu moto ak'ero ti o lo kolu kere ni nitori Igbara-Oko, ni Iwo-Orun Nigeria, ni afere-moju ojo Atsleta to ja sodo.

Eyi ti o sele niwon ibayo mokanla si Kotogora ni ona Yaari ni ipinle Ariwa, enia meje i a gbo pe o ku ti meji wa peskan aiye-şaskan orun ni ile Iwosan Kontagora.

Adara va ni ki Oluwa rere şowa loyo jamba Moto.

Oloye Asajon Se Ajo- du n Kewa

OLOYE Aminu Kosoko, Asajon Oloji Ereko ni ilu Eko ni o so ariya ajodun kewa ti o so ni gari oya ninu Iga re ni Ereko ninu oje ti o kaja.

Bu ko le rohin nigbati Oloye Aminu Kosoko fi ijo ba, ti awon oja ati awon alati-chin re ro gba yika, lokunrin-lokunrin ti awon oja Oloye ja ilu Isedafe ti nwon ape ni Gbedu yi ilu Eko ka. Siwaju, ni ojo Jimo ni ariya na ti bere ni Mogalasi ni ilu nigba ti Olori Imam, Alhaj Imam Ladi Ibrahim ni se s'ara fun Oloye Asajon, Oloji Ereko. L'hinna ni Oloye bere ni se itire-anu fun awon alamu ti ti ile oja na fi so.

Isile ni Itire

Ko se ro ni ile ile pete alarun kan ti Oloye Aminu Kosoko, Asajon, Oloji Ereko k' a Itire, ni Mushin, nigbati Alakosho e gbe Afenferi, (A. S.)

THE NATIONAL BANK Of Nigeria Limited

Incorporated in Nigeria in 1938

Paid up Capital £3,160,000

Bankers to the Western Region Government of Nigeria

HEAD OFFICE

80/88, BROAD STREET, LAGOS NIGERIA.

28 Branches Throughout Nigeria Including

IBADAN, ABEOKUTA, IJEBU-ODE,

OSHOGBO, OWO, ONDO, ILESHA

ILARO, BENIN-CITY, WARRI

SAPELE ABA KANO, ZARIA, JOS

LONDON OFFICE

15 THROGMORTON AVENUE, E. C. 2

Manager : F. O. Tyrrell.

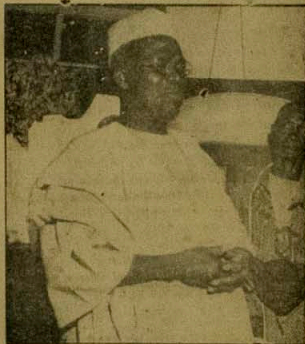
Telephone :
London Wall 4303

Cables & Telegrams :
Nathalger London

Head Office Representatives in London

E. Akinwunmi Dolerty,
CORRESPONDENTS

NEW YORK. PARIS HAMBURG



(Wo yoku loja owe kef.)

ORO CLOTU

EYI TO RONU F'ENI TO MOYE.

Ofo ma jeki ilu 'o gbado ni ti a gburo wipe Alakoso ile Ghana, ti ati npe ni Gold Coast tabi Auk-ata ri, Ogbeni Kwame Nkrumah ge 'Ishinti nwon ti ko opp'pp awon enia si itimile depo ti nwon mu xiru awon enia ti nwon je ara Alsge ise Ijoba ilu Ghana ti ositun je p'itaki ninu egbe ti Ijoba ilu i a wa ni ikawo won, mu crujeje ba enia gagebi awr ti a wa ni okere.

Lotio ati ni ededo, Ijoba ko gbodo tutu ju, bent ko si gbodo gbenu jyin-jyin, "kogh-na-ketutu ni Ijoba ni lati je, irufe owo ina ti Ijoba ilu Ghana b'ri; s' la ti ma a lo yi, ko le se alaiko are okan ba awon enia ti owon niife; si ilu na, nitoripe ni ilu Ijoba tiwa nibin nwon ma npa lowe wipo "Aji ki i je omo'ro de eguna" ati pe "Bi a ha fowo'otun na' omo, so' si tun fi osi fampra", bayi ni iwa ati ise Yoriba tiwa.

Nitorins, a fi wesika'wa yi kesi Alakoso ilu Ghana, Ogbeni Kwame Nkrumah ki o fiyedenu-maje fi ida-qla, re ge enia nitoripe sifi ni a ma nfi da-qla, aki ifi ge enia, Toto.

Oriki Aje Ogguniso

(Lati owo F.O. Las'el)

E-i to fi airise re ile ore,
yio mo bi aye ti nsare funni,
Ore at'ay, ko si bi g'ri ko si,
E'awo ba tan aya a buni h'lkora,
Osi ni nje ta lo mo-o-ri,
ge ewu li nje mo ba-ge tan,
Bur da Idikan' P'owo so Adebisi,
Ghobho aye ni ndgbi g'ni owo ba mba je
Toto fun i owo spe-kann ko!
Eyi to pe ore re ko to p'je,
Se jebis-jebis To iyo isnu,
Owo to so egbon d'aburo
To S'era d'omo Onikoyi, Agbolore
Eri sbe ta ka fi ra atupa lo di eni s'jiksana wo nko?
Se owo lo ro d'eni aye npe bo!
Toto fun u Aje Ogguniso!

(Wo yoku loju ewe kifa)

Nigerian Ports Authority

Vacancies - Assistant Surveyor (Hydrographic) In-Training.

Applications are invited from suitably qualified indigenous candidates for appointment to the post of Assistant Surveyor (Hydrographic) In-Training in the Harbours Department of the Authority.

QUALIFICATIONS:

Candidates must possess a minimum educational qualification of General Certificate of Education (Ordinary Level) or West African School Certificate with passes in five subjects including Mathematics, English and Physics or General Science. They should also have practical experience of Hydrographic surveying.

SALARY:

Scale S. 9 (e) - £345 x 17-464

Scale S. 9 (d) - £472 x 23-633

Scale S. 9 (c) - £637 x 28-861

Entry into any of the salary scale quoted above depends upon applicant's present salary.

METHOD OF APPLICATION

Applications stating present grade, salary, qualifications and experience should be forwarded to the Personnel Manager, Nigerian Ports Authority, Apapa Dockyard so as to reach him not later than the 31st of October, 1961. Candidates in the Service of the Government or a Public Corporation must submit their applications through their Heads of Departments who will forward them to the Personnel Manager along with Confidential Reports. Applications received after 31st of October will be disregarded.

(L. ADE. KUYINU)

Ag. Secretary to the Authority.

N.P.A NOTICE NO. 633.

10th October, 1961.

OKU'JA WOLU

NIGBATI OJA KO BA TA, TI ENITI O NRA
OJA KO TA' EYITI, O RA BAWO, NI YIO TI I
SE LERA MIRAN, EYI NI OGUN TI ONI
SOWO LE SE TI OJA RE YIO FI MA TA
BI ISU AKARA GBIGBONA.

E Polowo Oja Nyin

Sinu Iwe Irohin

ELETI-OFE

Omo Odun Medogbon W'e-won Odun Medogbon

Esi Oro Ogben Omu-Arani Ti Oso Sinu Eleti-Ofe, Ni 7. 10. 60.

ABA - Omu kunria kan ti o nje Emmanuel Okezie, omo odun medogbon ni nwon mu wa siwaju Adajo Kotu giga da Abs fun esun wipe ni ojo kpta-din-logun oju May odunni, Okezie gbe ibon o lo ju ile Ogbeni Samuel o si yin nibon nigbati Samuel ko jo ki o ko ayo aloku bi clogota ponun lo.

Adajo so si ewon odun medogun.

Ninu Kotu kanna ni Adajo ti ju Boniface Uku ti ko ni ibugbe fun esun ole si ewon odun mewa.

Olofe.

Goami laye lati le fun Ogbeni Omu-Aran ni esi oru. Akoko nibi ni wipe, omo ibile Oke-Ode ni mi, wcn ko si gbe mi wa wo nibi.

2. Owe kleni mo pa saja, ero kjai mo eyi gbehin?

3. Mo fe mo gbebi imo ipo ti o wa ni ile Igbomina. Mo fe esi ewon ero woyi ni ati (do Ogbeni mi, iyeku d'ese tonbo).

Ipa'e wa bi oya.

A.R.A. Orlanbishe
Omu - Oke - Ode

ODUN CRUNMILA

(O bere ninu iwe wa igbe to kaja)

Orile Edo Ijebu, Egba, Ketu, Shabe, Yoruba, Oyo, Ado Ekit, Otun, Ekele, Efon, Lohs, Ondo, Idanre, k le, Ede-Bitu, Remo, Oni-Nana (Gbara), Onipopo, Ga-ra, Sekiri, Dahomey, Ijesha, Owo, Saki, Ara, Elempe (Babalala Nupe Kakanda), Cyi-I-Bo-(Alawo funfun) Gembari-H usa (Omo Alafin Oyo).

Ijaw, Ughoroba, Njukun, Idah-Domo, A'aso, Akpa-apa, (Calabar-Efik) Agboh lati Usi Ekit, Omo Dudu wa ni Omu-omo-omo, lati Iradiran, ati Obi Onitsha Igbo ati'awo ile mira be-be lati Ile Edo, Omo-omo cmo Odun riwon nse. Olodumare ati Orunmili, unwon ro bi nwon ti se nwon da si ile lfe. Ifa so eleyi fun wa, akosile si jeri si eyi. Wayi o, nibo ni le ju awon ilaju owaro ojo nu si? lati ojo ti zwon Oyi. bo ti ji, awon ko sun, won ntesiwaju, won ko pada a hin. Ejeku a ji giri, ki a fi Ola fun ohun ti o nse ti aa, ki a ye bu eto ju u, ki a ye pa igba wa ni ankara ki a si mo daju pe, lomo ale ni fi owo osi toka si ile baba re!! ben enia ki biau ori, ki o fi fila da idi.

(Wo yoku loju ewe karua)

Eletí-Ofe D'araba

Kose Ro

Ero Asoro - Magbesi



Heather Crawford ni ni o ninu zweran yi ti o fa okun kan lo si eti re lati ma si gbo ero ti Ero Asoromagbesi na, eyiti nwon se fun won ti enia le fi sinu apo ewu lo sode.

Ero na kere tobe ti o fere maju Paf. Siga lo. Nwon npe oruko er, non "Agbeun-apo-ero.

Polowo Oja Re Sinu Iwe

Irohin Eleti - Ofe

OLOMO METALE-LOGOJI DOLOGBE

Ikede Pataki Fun Eyiya (omo Ile Igbomina Ati Ekiti)

Lati Oju A. R. A. Olorisho Oju Oke-Oju.
OLOMO METALE-LOGOJI DOLOGBE

OWERRI - Okiki ziwon iben ni o gbojkan nibi isin, ku baba aragbe e la kan ti uwon tpe ni. Uwon Isigbo ni uwon so wipe en ni o dagba julo ni gb'gb' oagbege ibi Owerri nitoripe awon ni o ku ti gbati o digba di. gbi-polu mpan-din-ladefa laye (109).

O fi omo bibi inu r; mpa-le-logoji sile pelu iyawo mejo ni opolopo awon omo, mo.

OMO OBA LO FUN ISINMI



Oloja julo gboja gbanra Andrew, oju oju mpa-din-logun ti tpe oju bibi inu Alajeluwa Elizabeth Keji, Oba obinrin i'u Oyinbo, ni a nwo ti Olotoju r; gbe dani ni idi oju ti: Oyinbo London, ti o nlo si ile Alajeluwa ile Scotland ni Balmoral ni ibere isin awon Be-ola

Omo Andrew julo alaro iya r; omo obinrin Margaret ati oju r; Ogheni Anthony Armstrong Jones ni yo joo rin ki Oba ati oju r; to wa ba wpa ni Balmoral.

Ako oju mi sivi nipe, Adura ni mo fe se fun enikan eyin, Oluwa Olofumare keni daju tiwa. Oluwa kosi ni pada l'hin wa. Amin ati ati ase o.

Adura ti mo fe ki e ma se fun mi niyi, no be yin ngesi Oluwa ni, ki e si joo na fun Oluwa Okrun yin. y'gban ti Oluwa fun mi, ki Oluwa mare so mo mi nina, ki kalsinu ti mofu nko iwo yi ma si ko o. Me fe ki e fi ara bale go oju mi yi l'gboye dada. On ni wipe awon Bahawa l'oma npa cwe kan biyi wije "Akifi fi itaju karun" toto o se bi owe. Eje ti a mo daju wipe o to as'ko loju Oluwa l'oni muwa kuro oko eru, awon ara Ilarin, gagebi obun ti arigbo ti si ni mo daju wipe ako, bo ni itan i tpe wou kowa laru ni ile Igbomina ti, sfi eyini dupa lowo Oluwa, Oluwa Olofumare, Ba'a slatu j'wo awa be o Masaigba 'Division fun wa ni ir'wo-ir'wo. B. Oluwa ba tpe rere, elo ngebi Oluwa koma se wa ni eni ti keni n'ere Oluwa, ki O si tun ma se lekun fe fun wa ni ile Igbomina.

Ejojo gbejo eyin ti e ata iwe yi, Oluwa keni gba lakaye enikan yin A'in ati ase. Sogbon a je idunnu fun mi wipe ki e bale fi ara bale go oju ti mofeso nipa awon nkan ti o n'ele ni ile Igbomina.

(Wo yo ko leju cwe karun)

Nigerian Ports Authority VACANCY—ESTATES ASSISTANT GRADE III

Applications are invited from suitably qualified candidates for appointment as Estates Assistant Grade III (Junior Service Appointment) in the Engineering Department of the Authority.

QUALIFICATION:

Candidates should be in possession of General Certificate of Education at Ordinary Level in at least five subjects including English Language and Mathematics. Preference will be given to candidates who have previous drawing experience, knowledge of Building By-laws and Building Construction.

SALARY:

Scale S (d) £143 x 11-330, 345; the point of entry depending upon qualification and experience.

METHOD OF APPLICATION:

Applications stating qualification, experience, present appointment and salary should be forwarded to the Personnel Manager so as to reach him not later than 25th October, 1961. Candidates in the service of the Government or a Public Corporation must submit their applications through their Heads of Departments who will forward them to the Personnel Manager along with Confidential Reports.

L. Ade. Kuyinu.
 Ag. Secretary to the Authority

N. P. A. NOTICE NO. 651.

4TH OCTOBER, 1961.

ODUN ORUNMILA

(O fere loju ewe keta)

Enyin omo ku arọ ojire, e ronu ki e gba rejo pupo tun ile yin se. Gbogbo alamala li o ngolowo pe t'ouu yi. Se awon omo iya tire ko sunwon, awon ara ile re ko dara, baba tire tabi omo tire ko mo se Ranti pe; ilasa ko sunwon, se on li obi ile; iwo iwo akuko mama fi egbe ori re fun kolokolo ja ja. E ma ma fi inu buruku ti . . . e ogun ori ba ohun ini yiu je. Ti 'elakalaku' ba gba ile re wolewole ko ni ti e-i-beni mu. Iba oro die la so fun omo luwibi ti o ba d'enu re a di odindi.

E gba ruku ti Egbe Afenifere Egbe Ojipe; 'Bi eke ku, a ku sigbo ina, s'aka s'aku, a sun t'odan erun; bi nwon ba 'nyo'le da, ohun a b'enu a ma yo won se. Da Orunmila Ifa' gbe lfe 'Ascito . . . Mo bere. Nje "Eke ni iwo yio se bi tabi Ika ni isere? Se Otito b' nitoripe, otito ni 'yio, leke, du da', Otito ni yio leke si gba kan si pelu pe bi won kegebe jo laiye keru jo 'Orun ti agogo ni' yio yo ri ju, 'Gbanga Topo yo . . . E ma se gbagbe, gbogbo ni ki e-du-ro ki e si mu Ase Orunmila se. Yio dara fun yin ara ale, Aogun Lemi, owo tutu a wole ile aroju, owa agbaye. E ku dun E ku iyedun, odan odurni ayabo

Abomi, Abeye, . . . Abeyec.

Ikode Pataki Fun Enyin (omo ile Igbomina Ati Ekiti)

La ti Owo A. R. A. Orilonishe Omo Oke-Ode.

oooooooooooooooooooo

Owe awon Baba wa an so wipe Eniti o gbo Ifa komo Ofa, Eniti o mo offa ko gbo Ifa beni ifa ta lofa. Toto o se bi owa on ni o wipe gbagbo iru awon nkan ti o spte ni ile odo wa kodara rara, o si ye ki eyi lqbaloba lape arayin jo lati fi owo sowo ati lati le tun ile Igbomina re. Tori ile Bbaba yin ni, Oluwa Olodumare koni jeki o ba jo.

Gegebi owe kan ti mo ma npe pupu sinu iwe iro hin yi, eni ma na wipe gbagbo awon ti won gbe wa ile Igbomina wa wo awon yin ni oni potimto bo ba da

ra ede, ti ko i dara dede, s'uyin ko d'eri fere fere Ipe Olu' wa. Oluwa yi si jeki o dara fun wa. Bile, gbebi iu awo rka' ti o rie ni Oke-Ode agbo w'pe okan ninu ewe egbe Ofemi Iewa n'be, o nda ede aiyede s'ile fari cha sil awon ara ilu g'ug'bon Owa kan ni mefe pa fun eyin Omo Oke-Ode.

Ogebi Owe awon Baba wa. Ti o so wipe Mati epe ko mi loju, atokoro lati nkegbe re' atos okoj'. 'Bi ina ko ba tan laso' Eje kin'ran lekane'. Imura di owo yin, ki a ma sun'asun owa o.

(We yoku loju ewe keta)

BOBBY, OSERE IDARAYA



Eniti owo nwo ninu awon n yi ni Bobby Brightwell. ti o je ekan ninu awon gegebi clere idaraya ti yio ba won sare ljo ti nwon . . . ara re nisisiyi nilu Rome

A si ni igbekole wipe yio yige n i nu ere s'sa na yio si gba ami Golu bo wale fun ohun iyin ere na

E Ma Ka Iwe Irohin Eleti-Ofe

Ikede Pataki Fun Enyin Omo Ile Igbomina Ati Ekiti

OOOOOOOOOOOOOOOOOOOOOO

Sugben emi ni igbtgbo si Olawa, wipe otiti yio bari eke emi fe ki gyn Omo erin tow, ni Oke-Qddj fi eyosowo, e mbe jovi aw n ti won gbe wa wo nibi da simec kro yiru. Olawa Olodumare ko ni daru ogben at lakaye niki e f yan. Olawa koai jeki atun-ri ede-nyede mo o j; imora ti mo f; fun yio, a si wu mi la si je wipe ki e gbo lagb'ye dida. E jeki ogbo ati lakaye to y n.

Evan aabegbys ila to' wa ni Oke-Qddj, Igbaja, Offa Oro, si, Ajas -oo, e kari gbo gbo ile Igbomina. O (iyoku di (s; to mbc)

Oriki Aje Ogguniso

(O bere leju ewe leji)

Iwo ajiki, Iwo ajiji yan bi Olodumare,

Esi to se tiru ko to pon,

Se oti turuku lo im ba kiri,

Burqda nfe o tabi oko gbo ?

Cwo ni esq eru d'cbe fun ni.

Oyinbo to gbchin asa to nfe lo pugo.

Se owo lo' wa wa mo

Bi t'emu ti shara fun ri.

Aje Ogguniso Elegbeje ade

Asq emi to go d'eni to gbo.

Agha to' nfo ni kara la f'lowo, lowo,

Se aye n'a agbo k'han to nso nje gdi. Ibi to di egbogba

ti r'gha ara adugbo n'k; Se owo lo so di Baba nile Baba Foko.

Baba n' shaba, Ba, a n'k'k'a.

Aje ti nfon ni siyi f'uzi k'la.

Asq awo d'ete asq um'erin d'ora.

Adun ni lowo ma dun ni l'oran.

Aje ogguniso, Egbeta Ch'arin.

Olawale Said Jalaisi Nilu Oyinbo

OOOOOOOOOOOOOOOOOOOOOO

Omo' e oku'arin kan ti oruko] re nje Olawale Said ti aw, u egbo; Alagbelebu Papa fi oko C'fufufu gte lo silu Oyinbo fun itoju oju ti o nyo l'oran, nigba ti awon Onisegun ile wa nihin ti se itoju re ti ko toai.

Irohin ti a ri gbo lati ilu Oyinbo nipe Said ti k'ko si; ala na n'awo se l'wasan ra, sugben n' oji ni obiri yipada ti smodi na si so di emi oran.

Awon egbo Alagbelebu Papa ni nwon fi oju-anu wo omode na ti nwon si se iral'lowo p'pu awon Olo- o'fufufu lati gbe lo s'lu Oyinbo fun itoju pataki. Aw n' enia ile Nigeria paapa, ati omode ati agba ko kere nipa idawo iral'lowo fun itoju on'gde na.

A ba awon s'bi, ore ati awon enia ile Nigeria kadun iu Olawale, ki O'oran'ferjin.

Nigerian Ports Authority

INVITATION TO TENDER
FLOATING DOCK NO. 3

Tenders are invited by the Nigerian Ports Authority for the purchase as scrap of the Floating Dock No. 3 mooring at Pool 5 Buoy in Lagos Harbour.

2. The dock, which is steam driven was originally built in 1925 but was extended in 1944 to incorporate an additional pontoon and give a lifting power of 3,600 tons in 2 1/2 hours.

Details:	Length over Platforms	365 feet
	Length over Side Walls	325 "
	Clear width between fenders	57 "
	Height of side walls above pontoons	24 "
	Width of side walls at Base	10 ft. at Top 7 "
	Numbers of pontoons	6 (One pontoon is now missing)
	Estimated weight of steelwork	2,650 tons.

3. The Floating Dock may be inspected on application to the Deputy Chief Engineer (Dockyards), Nigerian Ports Authority 216, Broad Street, Lagos between the hours of 8 a.m. to 12 noon and 2 p.m. to 4 p.m. not later than Saturday, 21st October, 1961.

4. Tenders should be enclosed in sealed envelopes marked "CONFIDENTIAL-TENDER FOR F. D. 3" and should be addressed to the Secretary to the Authority, Private Mail Bag 2588, Lagos so as to reach him not later than Thursday, 30th October, 1961.

5. The successful tenderer will be required within two weeks from the date on which he is notified that his tender has been accepted, to remove the Floating Dock for dismantling from its present mooring to a site outside the ports limits at his own expense with suitable craft approved by the Authority. The new position of mooring must, in the opinion of the Authority's Chief Harbour Master, constitute no hazard to navigation in the waters of Nigeria. If, however, the successful tenderer's yard is within the ports limits, a deposit of £1,000 will be required from the purchaser, and should any portion be left below high water mark, the deposit will be forfeited.

6. The Authority do not bind themselves to accept the highest or any tender.

(Bayo Kehinde)

Secretary to the Authority

N.P.A. Notice No. 64.

12th October, 1961.

Oloye Asajon Se Ajodun Kewa

(O bere leju ewe kini)

Oloye Obafemi Awolowo pelu awon enia pataki pataki ti nwon suru bo Oloye Awolowo nigbati Oloye Asajon fi' Koko'oro Fadaka le lowo lati fi si ile na Ijle na miringindin, o pa bambari.

"BANK NOTES OF ALL
AFRICAN STATES BOU-
GHT. OFFERS TO BM/
BLPR. BCM /MOND
LONDON N. I."

Polowo Oja
Re Sinu Iwe
Irohin Eleti-Ofe
L'osore