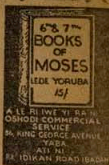


Ogun Ita'ja

E Polowo oja
yin sinu Iwe
Irohin Eleti-
Ofe, Kia L'oja
o ta.



VOL. X No. 564. ELETI-OFE LAGOS, SATURDAY, MARCH 22, 1958. KOBQ MEJI (24)

Woli Ba Elemu Wo'ja-kadi Lori Owo Emu Osise P & T D'ase Sile

IKORODU ROAD. Okunrin Woli Al'dura k'a a; eniti o ti ma nse iwasi fun awon ijo re wipe eniti o ba fi mu oti, eyikeyi to wu ki o je ki o mu ni won-tunwosa, oti aampara nikan ni Jess ko alitoripe, on kolti ri ninu Bibili wipe, ki a mase ma oti waini mo. Sugbo nigbati eniti ba wa sinu Awo Lentil a ko gboḡo fi oti tabi waini kan ena.

Ni owuro ojo Alamiid kan ninu oju Awe Lenti, ni otutu ati esanri ma woli yi, o si pe awon arisan lati wa gbadura fun en. Enikan riran wipe ki o mu emu Oguro ki o si fi pa ori asan na yle si faye, Woli na ko si jlyan o ran-ge o re emu ni asiri o mu u o si sebi won di wi, sitoto ara re si le.

Nigbati o se ti Elemu wa goawo Nati (9d) ni owo emu woli gbe sisi (6d) fun won ni omḡ elemu ba wanti gbagi je dirḡmḡ Woli

nibiti Woli ti ajiia-kadi lati gbara re sile ni ewu ba ya woli ko igbati-igba-mu bo omḡ elemu.

Omḡ Elemu sokun lo rohia fun awon eniti re. Woli mbe lenu adura nigbati awon ila -Elemu de ti won dirḡmḡ Woli orḡ ko dun nigbati awon ijo gbo wipe owo emu lo da lja sile Haba. Woli iwo ko se eyi ninu Awe Lenti lujā pa mi aro cpe. Kjai won o ti se orḡ Woli yi si o.

Awon osige agb'we (P. T. Workers) biu lo-dikodi da ipe silḡ laiko fi siwaju Alabojuto igbo-ke-gboḡo ipe iwa ni ero isoro (Minister of Communications and Aviation) tabi Alakoso ipe won na Director of P. T.) tele ki won to s'adede ka'worḡ joko lḡnu ipe ti o mu ifasihu ba gbozbo ilo ipe ati awon ara ilu.

damasa ti akowe gboḡo na hu yi, a si fi eyi gba awon eniti wa, awon osige ile ipe Ifiweranḡ na ni imoran wipa ni kia-mḡan; ki awon yara pada s'anu ipe won, ki awon le bḡḡe si-ḡo oro edun won na p'lu awon alase

Nigbati a nmura I ti gba ominira wipe ki a ma se lḡba arawa funwara ni o tun je iru fan dirudapo hayi ni awon ti a ba pe ni onimimo si el ye lori ti a fi se asoji wa ylo ma fi se itojona wa bayi? nje ko ha ni ye ki lḡba ma se gba iru iwa kabankabankab: biyi luyi ni lo wa, ki awon agb'wo miran le fi se ak'ko fun iḡba miran.

E pada s'anu ipe o.



OLOYE S. L. AKINTOLA

Ogbeni Gogo Nzeribe ti ipe akowe awon gboḡo ile Ifiweranḡ na ni a gbo wipe o se gboḡo eto idape silḡ na ni asiri lati le fi dsu lḡba ati ara ilu jake-jado ile Nigeria, bi o ti je wipo koko pataki ni ile ipe P. & T. je fun ilu wa Nigeria yi ni asiko ti a nlepa ominira arawa yi.

A wa Oniwe Irohin Eleti-Ofe ko iru lwa aga-

AWOLOWO NILO BE ILE ISRAELI WO

Ninu ipade apeje kan ti Oloye C.D. Akran pe fun Olofa obinrin, Oloḡomḡ ara ile Israel kan ti o wa be ile Nigeria wo.



Oloye Awalowo se wipo ati pe on lati wa be ile Israeli wo Oloye Akin Doko ti o nse Minister of Agriculture yio si lo ko ipe agbe nile Israeli lodunni ti yio fi se atunse ipe agbe ti ile wa.

SEVEN! SEVEN!! SEVEN!!!
YORUBA COMPETITION No. 9
£200 Awaits You

1st Prize £100; 2nd £50; 3rd £30
Closing Date 14th April 1958. Results 21st April 1958.
HOW TO SOLVE: Fill the missing letters in the clues provided, post completed entries accompanied by Post or Money Order to the MANAGER AFRICS NEW AGENCY, Private Mail Bag, No. 5164, General Post Office, Ibadan, Nigeria. 2s 6d for one entry and 1s for every additional entry. Plain paper entries accepted.

- 1 - - - - - W - O je ogelu nla kan ni Najirija
- 2 - - - - - ASA Okunrin yi ti di ologbe l'EKO
- 3 I - - - - - R - O je ilu kan ni ile Yoruba
- 4 - - - - - AN - I On ni akobi omḡ Oduduwa
- 5 - - - - - L - FIN Eniti nla kan ni ile Yoruba
- 6 - - - - - MAWE Oba nla kan ni ile Yoruba
- 7 ORIMO - - - - - Eyi je Orukḡ ni ile Yoruba

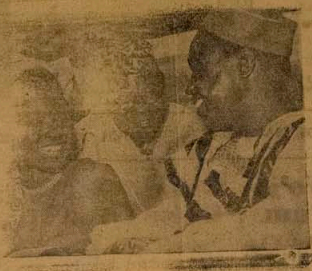
NAME _____

ADDRESS _____

P. O No. _____ Value _____ No. of entries _____

Miss Nigeria Nilu Oyinbo

Isire Awon Arufin Lodun 1956-57



Obirin ti a nwo ninu Aworan yi ni Miss Nigeria (Obirin ti o ni ewa jojo nile Nigeria).
Oruko omofirin na nje Omidan Grace Tinuké Oyelude, nigbatu o je faaji ewa lo silu Oyinbo, o ba awon omofiru mejl pade ninu ile egbe British Council ni Hans Crescent.

Awon omokunrin mejl ti arewa na mba soro ni Ogbent I. O. Emelonye ati J. O. Fuwa, ori-ma-le-lo-ni odomobirin na, spe sindodo obirin ni ojo ti Fuwa koko fi oju ri Miss Nigeria bi ko ba si bi o ti je ni boys Lojo na ni awon iba di toko-taya erin idunnu to jade lenu awon meteta.

Miss Nigeria de ibiti awon ti oko Ofarufe akara aladun ile Alajisan ile oja Gtisi o lo woran sinima ni osasa gangan ki o to pade wa sile.

Ninu gbigbo a won arufin ti awon Olopa ba se ejo Larin odun 1956 si 1957, iye awon arufinisi etesan ti awon arufin ti olopa si ba se ejo ni awon: R.C.M - 8,356, C.M.S - 4,385, Methodist - 2,438, Afrika - 1,198, Aladura - 4,346, Imale - 7,283, Keferi - 9,308.

Ninu odun 1956-7 iye awon Arufin ti awon gbe ju sinu awon je 24,131. Iye awon ti o lo si awon osu mejidilogun tabi jubelo je 3275, awon olopa mejila si osu mejidilogun je 3202 awon olopa mafa si odun kan je 4199 awon olopa mafa si mafa je 5109 olopa kan si mafa je 7324 a won ti awon siwon ko pe osu kan 1924 Ni akoko odun ti a wi iye awon obirin ti wawon jaka-jado ile Nigeria je 1836

27 ni iye awon omodekunrin ti a mu ejo won dawaju adajo ninu odun na. Gomina pase wipe ki ade okan duro si egba awon ni Pota a na awon merin ni egba a si da won ale a gbe ejo okan si kotu Asasi nitari ejo spana ni a mba to a si da awon yoke sile. Ijoba ile Hausa ko ile meta fun awon omofiru ti ko gboran okan wa ni Kano okan ni Madugari ati okan ni Buganda.

Apapo iyesi ti a re lojounmu ni gbigbo ile Nigeria to 1,172089

The Chairman Of E.C.N. On Tour

The Chairman of the Electricity Corporation Dr. Eni Njoku left Ibadan by air on Tuesday 18th March on a tour of some of the Electricity Undertakings in the Northern Region of Nigeria.

He will visit Kaduna, Zaria, Sokoto, Gusau, Kano (Via Zaria) Katsina and leave Kano by air on the 26th March 1958, for Lagos.

Dr. Njoku had discussions with the Sardauna of Sokoto, Premier of the Northern Region in Kaduna, and met the Civic Heads and Principal Officials in the supply areas which he was visiting.

Hear your favourites!

INSTRUMENTALISTS
SINGERS
DANCE BANDS

on
Yellow Label
RECORDS

Recorded in West Africa
Sold by all the best stores



"HIS MASTER'S VOICE"

Manufactured by THE UNITED AFRICA COMPANY OF NIGERIA LIMITED

Akiyesi Pataki

A fi eyi kede fun gbigbo enyin Asoju Iwe Irohin wa nile Yoruba. Poke Oya, nile Ibo, Poke Okun a ti nilu Oyinbo wipe eniken ti ko ba fi owo wa range ki osu to pari so ko oruko re fun Loya Eleti-Ofe, so ba se ejo so si gba owo Irohin ese lowo re.

OLOTU.

ORO TI EIYE ADABA NSO

Eiye Adaba lo ma ke bayi fi wure wipe :-
**Elegbodo, ko ku, Elegbodo, ko ku, Onibara, ko ye,
 Onibara, ko ye.**

**Itan Igbesi
 Aiye Owo
 Sile-kan**

Ladi owo Y. K. AILARA

Oju mejì sí mò mí sílékàn sí orúkò mí, Àbí mí ní òdún 1950 ní ilé iré'wò kàn tí a npe ní 'Royal Mint' ní ilú Òbà Copper ní orúkò bába mí.

Géggbì mò tí sò síwájú ggbè mejì ní mò ní. Ní ggbè kinni, a ya aworan Oba George kefa tí ilu Oyinbo tí o ku ní òdún 1952 sí. Ní ggbè mí kejì, a ya lgi ope sí, a kò orúkò mí sí òdún tí abí mí sí, a sí na sí Wínsí-wínsí sí mí ní etí.

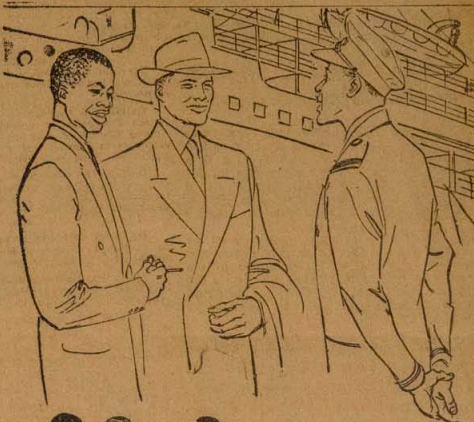
Ní ojú tí mò de aiyé, èjù ojú mò daradara gbo-gbo awon tí awon sí arí mí ní lú wò òdún, awon sí asò pé mò mu erire wa sí aiyé. Ní ojú kanna ní sí ká mí mò awon èjigbè mí míran sínu apò kàn, wòon sí gbé wa wa sí ilé Nìgeríà.

Nìgbatí a gunlé sí ebéte Èkò, ilé-ìfí owo pámp (bank) ní a gbé wa ló lè ní a sí tí tu apò tí wòon fí dí wa lati ilu Oylabo. Ní ojú kejì tí a de bank ná sí Ogból Háusa oníṣowo ká a wa lati gba owo, emí sí lè ṣkàn nínú a wòon tí a fí sùn owo fun Háusa ná.

Òkàn mí báṣé ní ojú tí mē kuro sí bankí yí sítorí pé mò rē pé ilá Èkò ní sgo fí sè lújoké mí a kò mò pé alá sí mò alá. Ní ojú keta ní sùn kò mí pé mò awon èjigbè mí míran'wa sí ilu Agèṣe a sí fí mí ra obí lówé agbè kàn lati ojú ná ní, mò sí tí béré wahalá sídì ní Igbesí aiyé mí.

Iléto kèkèrè kàn sí agbè yí mú mí ló nìgbatí a sí de lè o dá mí mò awon owo míran sínu orú kàn è sí tí orú ná mò arín agbò ogède kàn ní chin-kulé rē: T'òṣan-tòrú ní mò sílagun nínú orú yí láu rē gbóna pupò. Ólórún lè sí yò mí ní nke tí lóu orú yí bá Ólórún l'áṣe.

(Wò yekú lojá owo kẹrín)



Awon Gbajumo enia gba...

Eṣeun — Emi yio ra Star sí! Bìá ná má a fun mí ní itelò-rún pò! Gbogbo awon tí wòon wa bẹ wa wò ní wòon gba pé STAR BEER dá ra pupò, o nwo bí titun, o sí dára gan ná ní. O taa nfe omiran bí?

OTI

STAR

l'o je eyiti o dara ju!

Beal Sammy Sparkle wi



STAR BEER dá ra pò Oti tí o nwo lwo títun tí awon sí fí eroja tí yio má a fí ra sòkè sè ní. Awò rē wò ní l'òja, Oorun rē ghaadun pupò. Awon ero-ṣe tí o dára pò sí awon fí apò eroja rē pò.



ELETI OFE

A-NU-WON KO SB WI LEBU

EDITORIAL OFFICE & WORKS CABLES & TELEGRAM

28, Kosoko Street, Lagos "ELETI - OFE LAGOS"

P. O. Box 467 Phone 23370

VOL. X, NO. 564, LAGOS, SATURDAY MARCH 22, 1958

Iya Ni Wura, Baba Ni Jigin

Iya ni iya nje, Omo ni omo nse, sugbon enla bi Iya kosi, tala je se omo olomo lare. A fi oro yi pasamo lori wosika wa ose yi, nipa Iya ti o se okunfa ibi awa omo enla wa s'ode aye yi, ani Iya ti o ru eru wa fun oja mpaan tabi jubelo, ti o fun se itoju wa nigba ewe aye wa, ninu jije, ni-nu aje, ni ainiye igba ti Okete won febi sun.

Papan nigbati a ba se iranti wehala awon Iya lori wa laiko ti a ba nse amodi gesebi omo-gwo ti ako le so bi o ti nse wa ninu ati aiwo won l'osan-Jeru, oro Iya ko se fi sere. Ise kekere ko ni Iya nse lara omo, Ighin itoju, Ise ebo bi igbesi aye omo na yio ti se dara nipa oko ile ti Iya yo fi ko omo re.

Ako so oro ti awon Iya oloko kan ko kun Kobodu, awon Iya ti ko le fi ara da wahala diu lati le duro se itoju omo ti o bi, awon Iya to nja omo won silu laiko bikita fun itoju won nile oko, ti awon yio ma wa oji kiri nipa siso arawon di jarja, ilu moka obinra, Irufe awon Iya bawoyi ko ni a wai.

Iya ni wura.

Imoran Fun Enyin Abiyamo

Enyin abiyamo e wa ra OMQRELA o dara pupo fun awon omode.

Ama je ki omode ri orun sun daradara o dara fun otutu, lko ati oriogisi arun miran ti o ma mba omode ja ni asiko ehun. Opolopo abiyamo lo ti lo egbogbi yi fun omo won ti won si so wipe o dara pupo fun awon omode

OMQRELA BABY MIXTURE
(Sile Meji Abo 2/6d Fun Igo Kan)

O wa Lodo
COMMERCIAL MEDICINE STORES
(Qualified Chemists)
10, VICTORIA STREET, LAGOS.

No 73/8, 2/645

**Ministry Of Education
Western Region.
Vacancies For Male Staff Nurses**

Applications are invited from suitably qualified candidates for appointment as Resident Staff Nurses at the Government Regional Teacher Training College, Moor Plantation, Ibadan, Government Trade Centre, Sapele, and Government College, Ugbelli. Scale of Salary - N.1 - £150 X 9 - 168; £204 X 9 - 240; £252 X 12 - 300

The point of entry will be determined by previous experience. A rent-free unfurnished quarter on the college compound is provided.

Qualification: Applicants must have passed the State Registered Nurse's Examination or the examination conducted by the Nursing Council of Nigeria and must have had considerable experience in nursing and general care of the sick. Applications from Nurses retired on pension will be considered.

Duties: The successful candidates will be required to take charge of the College/centre dispensary and sick-boy; and be responsible for daily care and medical treatment of boys with minor ailments. He must be qualified to know when a case should be referred to a doctor.

METHOD OF APPLICATION: Applications should be addressed to the Director of Education, Western Region, Ibadan, and should reach him not later than 31st March, 1958.

Applications from candidates in Government Service should be submitted through the Head of the applicant's Department and be accompanied by a Confidential Report.

Applications from candidates not in Government Service should be accompanied by copies of certificates and testimonials.

Se Si Enikeji Re Bi O Ti Nfe Ki O Se Si O

(O bere loju ewe keta)

Iyawo re.

Iyawo sare to Mogaji pe ki o sba on, Mogaji pe oko labere ejo Mogaji so pe iyawo ko je so rara O bere re pupo sugbon iwo lo fa sababi ija. Ni-ghai iwo ba ye se bayi (Mogaji fi owo mejiji se gba igbon soko, iyawo re ko ni so bayi (Mogaji tun fi owo mejiji se njase keragbe abe oko) mo se si iyawo re bi o ti nfe ki on na se si o".

Opolopo okunfa lo ma npe iyawo won ni afon" olesi ati oriogisi arun miran to lo bi enia nitu. Ba yi fun iyawo re mase ba yi lo ju ajejo tabi ki o yan ni lpo. Ko si gadi ko ol edun okunfa nitimira oko nla-ti sora nipa iwa ti yio mu iyawo re banuje. Nitolo oko ni olori aya, oko na

si nitati mo pe iyawo on ki ise omode.

Ki ise pe ki oko so aya di or sa akunlebo o. Nitona oko ni lati mo pe iyawo on ki ise ewe o ye ki on sora lati soro fun. Tonja" se si iyawo re bi o ti se nfe ki on na se si o".

Kere o!

All the original ogun German to sepe de fun oiruru sisan tokunrin ohinrin. Tete wa ra tire e'o so tan.

J. A. AJAO BROTHERS

MEDICINE STORES
7, Egerton Road, Lagos.

ILE INDIA PO

Ijoba Sudan Taku Mo Egypt

Khartoum. Awon omo egun ile Sudan ti o wa lori iso, mu irohin pada wa wipe, awon ri omo egun ile Egypt lori ile Ijoba Sudan.

Ogbel Khalil ti o nse Prime Minister ile Sudan, so wipe, nigbati on ri won, on ko ba won ja. Beni on ko yo won lenu, sugbon on yo ran onise si egbe. Mafobaje wipa ki awon so ipianu lori re kiakia. Bi o ti wa ki o ri on ko awon omo egun ti on kuro ni aye re boya nwon tun le fe te siwaju.

Ninu gboabo swon ile ti o si o ede Gesi Ile India ni eyiti o tobi juo ile Nigeria lo tele Ghana lo sike.

Eso ti a nwo rinu aworan yi ni Premier Okan nina swon cya ile India ti a nso ni Pakistan.

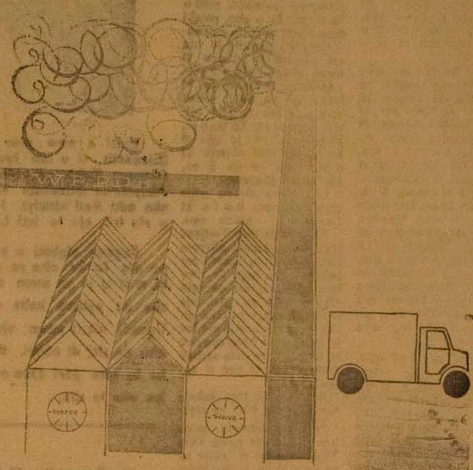
Itan Igbesi Aiyé Owo Sile-kan

(O bere loju ewe keta)

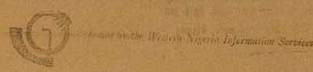
Sugbon ni osan ojo kan ni omo sibe yi kan ti o ni si ile-eko gba kan ni Ibadan de lati gba owo ile-ewe, baba re si wa hu ori ti o ko wa si; o si ko ni mo owo fun omo re yi. Igba yi ni lera tun de dije ni lori pe mo wa ninu spo omo ile-ewe yi to ose meji lai se ise kan ki o to fi mi ra iwe ni ile iuwe kan ni igboro Ibadan.

A tun ba ni mo lbi ko-to-koto kan pe lu awon aburo ni miran bi Sisi, toro ad kobo opolopo swon egbon ni ti oruko won oja dala (Silemeji wa sibe petu. Glogbo wa ni ni onwajo si mo ile. Nko lo lu eru kan lo ninu ile kotokoto si ki ori to yo mi sibe, mo si bo si owo Ogbel kan ti o tun ti mi toro fun sibe kan ni ojo keji.

Ni aye oju ti mo de owo alagbe yi ni o fi mi ra garilowo obinrin kan owo obinrin si ni mo ni ti bo sosa. Egbel kan ko koko si mi sibi mo bo si raga, moto a ni ma kaja lori mi lojolemo to bo ti glogbo aworan ti a ya si egbe mi mojeji fi lere pare tan ti oju mi mojeji ni ndan pala.



The object of the Board is to promote the development of producing industries in the Western Region. Agricultural plantations of rubber, oil palm, citrus, pineapples, coffee and cashewnuts have been developed; some wholly owned by the Board but others managed in partnership with Local Communities. A Canning Factory at Ibadan for processing pineapples and citrus fruits, a rubber processing factory at Ikpoba, Benin and a Rest House in Ibadan are also operated by the Board. The Board encourages the development of industries by attracting overseas capital. A Plastics Factory and rubber plantations have already been established in partnership with overseas private interests.



Oku Nre- hin Ohun To Ri Lo- na Orun

Okun niu awon omo egbe Aladura ni Station joko lo wa rohin hayi fun asofu lwe irohin Eleri-Ofe, o so wipe lati oru ni on ti ku. Ko tete han si on pe, on ti ku, ohun ti o jeki on mo ni wipe, on ri gboḡo awon enla on ti awon nsokun, ati ago ara on ti o wa niḡ, on si ri awon enla ti o joko ti ara oku on ti o mbe niḡ.

Bi on ba gbe oju soke orun, nge ni gboḡo re yio funfun lo gbo-e, bi on ba ta siḡ alpa, nge ni on yio lo soju Saama bi lwoḡo eḡbetun buso, on yio si tun pada wa siḡ. Gboḡo ibiti on ba fe ri ni on yio ri lesḡkana.

Gboḡo bi ategun ti nfe o nru on ki on tele efuru na, sugbon okun tere kan bi owa alantakan ti o de on moḡ. Nigbatl on ba asoro, eḡḡenḡ ko ni gbo, bi nwon ba si asoro, on yio gbo. Bi on ba fowo to eḡikan ko tiḡ ni mo ala pe ohun kan ḡeḡ, ni-gbayi ni mo to mo wipe mo ti ku.

Nigbatl o se ni on ngbu-ro agogo lode wipe, 'Po ya o' "oko fe si o". On ho soḡe on ri omi asa ti o lo jantere ati oko Oyinbo ala kan ti gboḡo enla li oyinbo enia dudu lerubawa Kora olukuinku lati gboḡo ipinle ile aye wa nsare wo oko yi. On paara ko kere on sare ki on le ba oko na bi on ti fe wo beḡi Qaako dahun pe kini cleyi nfe?

Afara lo ba et ki nwon mu on. Bi on ti bi siḡe ti on si pada wo iḡu ile on tun ba ara on ni idu-bule on si ri Dokita ti o niun on ni Abere. Kete lehin eyi on si gbo ti Dokita ngerin wipe yio diḡe niḡsiyi. On si gbo ti eni kan pe on wipe Al-gba James beni on dahun ti on si diḡe.

Eyi fihan pe bi enia ba ku ti ko ba ti le wo-ko ti o nko ero orun lo ireti ti wa fun esiti o ku na.

Se Si Enkeji RE Bi O Ti Nfe KI O Se Si O

Lati Owo
Omidan Dupa Odutire

Inu ni yio dun pupo si e ba le gba mi laye lati se alaye die sinu lwe yin Olo-yinmomo fus awon esiti o ba ni eti ki o gbo, pataki nipa awon okunrin esina.

Opolopo okunrin lo nfe aya sile lasoju ti woa si ntoju obiorio miran l'ada.

Okunrin ti ko ba fe ki iyawo on ya nabi osilati gora pelu lwa agbare. Nitari ototi ni yio ko omo re. Bi okunrin ba je eḡa si ko ba tun l'ari obiorio ki o mo daju pe aja fi on, aja ki isi gbeawo.

Ibiti iyemu ala wa nipe ofate okunrin ko fe ki iyawo on je enisina enia.

Ni niye lasiḡin ti atijana soro pupo okunrin akorara labḡ agbe fe su bukato mo bukata. Eru itoju ile nwo lorun. Nje nigbatl okunrin ofi eku kaka ra gari, nje iḡu re yio dun bi o ba alati ma ra eḡbogi ti yio tun fi wo arun bi? Nje orḡ rere ha le ti enu re jade nigbatl arun ba nge bi ope ti nge oju?

Emi yio so itan kekere kan fun yin itan na siyi.

Nju kan okunrin asopa kan fe oḡigge lorun Faya Nigba gboḡo ti iyawo ba se ohun ti ko te oko lorun labere ladi ti iyawo re fi se be oko ayan eba si iyawo ara nipa fifi owo mejeji gbe igboḡo soke. Iyḡa nipe o npe iyawo l'oniḡge lorun niyeḡ. Ebu yi a ma dun iyawo ju pe ki o na lo.

Nigbatl o di oju kan iyawo pinu lati bu oko l'ebu ara tire na. Bi oko li kuku fi owo mejeji gbe igboḡo soke iyawo fi owo mejeji se ajuwe kereḡe so wa labḡ oko re Inu bi oko tobe ti o fi yo ada lati pe

(Wo yoku loḡe ewe koran)

Iya Oba Nilu Australia



'Eniti a nwo nina awaran yi ni Aya'ba Elizabeth ti o nso iyawo Ologbo eba Gool (George Kefa). On yi itan na ni iya ti o bi Alakyalawa Elizabeth Keji, ti o mbe lori oye eba niḡu Gool niḡsiyi. Iya oba yi ni a so pe o via irin ajo lo lati London si ju Australia.

Sugbon nigbatl o spada bo wa sile, a gbe pa die lo ku oko re fere jabo lona ati gage-bi o si ti je pe awon olaye lori lo nse toju obo na agbara kaka ni oko na fi gunia si Uganda nibiti awon oḡeḡon gbe nse atunse oko na siji di itisiyi. Boya bi atunse oko na ke ba tate pari Oho ofnrufe miran le wa mu iya obo lo sile.

No 73/5, 2/41

School Of Hygiene

Health Auxiliary Training School,
Ibadan.

A Three-Year Course of Training For
Public Health Inspectors.

Applications are invited from suitably qualified candidates for appointment as Public Health Inspectors-in-training.

For full particulars and method of application please see Western Region Gazette No. 13 Vol 7 Notice No. 241 of 6th March 1958.

Closing Date 20/3/58

Ile Isura



Ile ti a nwo ninu aworan yi ni nwen npe ni Museum (Ile ibiti a nfi jawon ohun ataye-baiye ile wa pamo si) gegebi awon era ile wa, awon ohun isedale wa, tabi awon nkani ti a gbonju bu ni ile wa, yala ni eyiti, a mo itan re tabi eyiti a ko mo nipa re rara.

Nipa bayi ni awon ojogbon enia fi le mo bi akoko igba ti nkanna ti sale ti peto.

Itan Awon Ogboju Ode Loke Amilolo

Lati Owo Ego (Apa Kejo)

Nigbati awon ode na ti fo Oke Agbefo tan awon mura lati pada sile. Alukete-fogun jo lo siwaju won sitori o ni eiyi Atokan lowo bi eni ba sina eiyi yi ylo fona han.

Bi awon ode na ti nite siwaju lojiji ni awon eranko bi pidigidi Igala Kerekele onila Agbalinbo ti won si mbo pelu ibinu oluku-luku awon ode won yi tun mura nigbana si Jagilegbo-Sogun kigbe rara bayi pe "Abo".

Nigbati awon eranko awoniyi sare gba Ibomiran lo Ogbori - eio sa-fila-fila wa lo egbogbi Egbe" egbe si gbe ghogbo awon ode na lo kuro nlu. Ajo papa-pata Nigbati awon bale tan awon nbo ihio olukun.

Nwon rin bi awon irin ojo meli awon ja silu Ajiran awon ara ilu na bere si ki won ku ewu ku frin nigbana ni Afilaka darin bayi wipe.

O ye Giwa o ye tela Ewu ododo y'Ologbo o Awo ye Giwa.

Bo ba sey'a elomiran lo-ku o

A se wo-we a dake o ki lo pada? Omi Ajalolo nigbogbo awon ara Ajiran ba gba ijo ti lu si niu ara, re Omele niu ara re.

Nigbati awon kuro ni Ajiras npe ni awon kan Oloso nibiti o gunwa re-pe-le si, Kanko-kanko si egbogbi kan lowo ti awon npe ni Eiyi sugbon Ojumo kan-ogun kan dahon pe, ko si da eyin duro na, ki awon woko ki efufu gbe won soda, sugbon Kanko kanko ko ogoro siaw awon ode tote fe dale awon ni ki-nwo lo "Eiyi".

Awon ti o fe lo "Eiyi" ni Dalmo-fogun loto Ogbori-Odo-ja-bi-aji, Kanko-kanko Awon ti o fe wo-ko ni Ogunfunmilire Alukete-fogun jo, Ojumo kaa ogun kan Jagilegbo-Sogun si Ogbori-ejo-sa. Eyi ti a nwi yi pe awon si bere si taha si ara won.

Nitori ki o ma ba si ti wipe a nfi owo gun ara eni oju awon ti o fe lo "Eiyi" itomo ara won lese kanna,

efufu si gbe won" lo bi eiyi Ogbori-ejo-hinu o" y9 akaraba o si fi ka won, gbogbo won ja lule urwon si ba omi oja lo.

Ogunfunmilire to tun awon Oloko wipe ki awon gba ora odo Agan O ta mariwo o si lo gunle si Isiri sugbon oko na gebe sinu emi Agan Ogunfunmilire nikau tosojo lo dele.

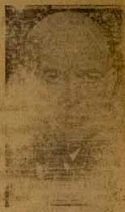
Eyi si idi re ti awon se nso laria awon ode wipe ako eran ni owun jojo. Nitotina titi di oni bi ode kan ba pa eran nla bi o ba ti dele ni yio bere si tu eran na.

Awon ogboju Ode na bi awon ti ni egbogbi to nwon gbagbe lati tu awon eran ti awon pa.

ORIN

Nigbati e npa cwure cwure Nigbati e npa agutan agutan Nigbati e npa tolo-tolo baba akuku A o dele nyin Jean ri.

Olori Ilu Amerika



Balti a nwo ninu aworan yi ni Ogbani Eisenhower ti nse baba egbe tabi Olori gbogbo ile Amerika.

A gbo pa oko ofurufu mejo ti o lagbara ija fo lati ilu re wa si England talpe yi.

PIRATE

SIGA

TI O Gbadun

LAGOS RACE CLUB

EASTER MEETING

Saturdays 29th March, 5th April, Monday 7th April, Saturdays 12th and 19th April, 1958.

FIRST DAY

RACE No.	Distance	STARY
1	Seven Furlongs Handicap Bottom Division	2, 45 p.m.
2	Seven Furlongs Handicap Bottom Division	3, 15 p.m.
3	Five Furlongs Handicap Middle Division	3, 45 p.m.
4	Five Furlongs Handicap Middle Division	4, 15 p.m.
5	Five Furlongs Handicap Middle Division	4, 45 p.m.
6	Five Furlongs Handicap Middle Division	5, 15 p.m.
7	THE JUBILEE CUP Top Division	5, 45 p.m.
8	Five Furlongs Handicap Middle Division	6, 15 p.m.

SECOND DAY

1	Six Furlongs Handicap Bottom Division	2, 45 p.m.
2	Six Furlongs Handicap Bottom Division	3, 15 p.m.
3	Six Furlongs Handicap Bottom Division	3, 45 p.m.
4	Nine Furlongs Handicap Middle Division	4, 15 p.m.
5	Nine Furlongs Handicap Middle Division	4, 45 p.m.
6	Nine Furlongs Handicap Middle Division	5, 15 p.m.
7	Five Furlongs Handicap Top Division	5, 45 p.m.
8	Five Furlongs Handicap Top Division	6, 15 p.m.

THIRD DAY

1	Nine Furlongs Handicap Bottom Division	2, 30 p.m.
2	Nine Furlongs Handicap Bottom Division	3, 00 p.m.
3	Six Furlongs Handicap Middle Division	3, 30 p.m.
4	Six Furlongs Handicap Middle Division	4, 00 p.m.
5	Six Furlongs Handicap Middle Division	4, 30 p.m.
6	Six Furlongs Handicap Middle Division	5, 00 p.m.
7	Eight Furlongs Handicap Top Division	5, 30 p.m.
8	Eight Furlongs Handicap Top Division	6, 00 p.m.
9	Five Furlongs Handicap Top "A" Division	6, 30 p.m.

A Nfe Asoju

A nfe Asoju fun iwe Irohin wa Eled-Ofe lati kun awon Asoju wa ni awon Iru ti a daruko si Ise-Igbe wonyi-

Abeokuta, Ijebu-Ode, Ijebu-Igbo, Be-Ife, Oshogbo, ati Port Harcourt.

E kowe si Olotu Iwe Irohin Eled-Ofe Kosoko St. Lagos.

FOURTH DAY

RACE No.	Distance	STARY
1	Four Furlongs Handicap Bottom Division	2, 45 p.m.
2	Four Furlongs Handicap Bottom Division	3, 15 p.m.
3	Four Furlongs Handicap Bottom Division	3, 45 p.m.
4	Seven Furlongs Handicap Middle Division	4, 15 p.m.
5	Seven Furlongs Handicap Middle Division	4, 45 p.m.
6	Seven Furlongs Handicap Middle Division	5, 15 p.m.
7	THE OPEN RACE Ten Furlongs Top Division	5, 45 p.m.
8	Eight Furlongs Handicap Top "A" Division	6, 15 p.m.

FIFTH DAY

1	Five Furlongs Handicap Bottom Division	2, 45 p.m.
2	Five Furlongs Handicap Bottom Division	3, 15 p.m.
3	Five Furlongs Handicap Bottom Division	3, 45 p.m.
4	Eight Furlongs Handicap Middle Division	4, 15 p.m.
5	Eight Furlongs Handicap Middle Division	4, 45 p.m.
6	Eight Furlongs Handicap Middle Division	5, 15 p.m.
7	Six Furlongs Handicap Top Division	5, 45 p.m.
8	Six Furlongs Handicap Top Division	6, 15 p.m.

There will be an Auction Sweep at the Members Enclosure on the day preceding each day's Race Meeting, commencing at 6.30 p.m.

EBI KI WONU KI ORO MIRAN WO.

Okunrin ometi kan ti o ma gidi yo tan to awa Moto re Pawa kolaji ni o fi apa re, ti o si nki-gbo wipe "abi nipa ni o" e fun mi lori ba lgo kan o. Eyi fihan pe ko si ohun tole mu eza gbogbo ebi.

M. B. T.
(BAGK BLOOD TONIC)

Ina de, Okunrin patawa, Adere de, Okunrin si lo, Eyi ometi nire, ayi patawa. Adere babura wogbe, dilaun rabin-ghun M.B.T. hogan-aji ti nmi ni joun bikan, amu ni wogbe bi dilaun, amu ni bi bi dilaun. Abi wogbe patawa, ayi jidi patawa abi wogbe. hogan-aji, jidi wogbe, adere-aji, hogan-aji, hogan-aji.



ARADAN STORES ROSS 2
EBUTE-METTA