



VOL. No. VIII 485. ELETI - OFE LAGOS, SATURDAY, SEPTEMBER, 15, 1956. KQBQ MEJI (2d.)

Lamidi Alabi f'odun Marun Se ifa je

Nigbatl adajo fe se idajo le Lamidi Alabi aj'omogbe lori nipa awon omokunrin meta ti o gbe, Ganiyu Adisa, Musibawu Adio ati Babatunde Afoke, ni Kotu Ganran ni ojo kokanla osu yi.

Lamidi Alabi, wompari okunrin na so fun adajo wipe, ko ni lati gba oro awon eleri gbq, nitoripe oro eri won ko dogba mo'rawon.

Adajo si fest dalohun wipe oro eri won ni gbomgbo oro ninu, bi o ti je pe, o se kan'le, ko si eri kan ti o gbe o le se, iwq ko se alaye ohun ti gbogbo awon eleri fi tako o, nitoripe, ki o yara losi ewon odun marun pelu ise ase seabadi.

ELENMO TUN SORO

Nigbatl awon olopa mu gbengbeleku Alabi elenmo jade ninu apoti lati mu losi ile re, jagun boju wo chin, o so fun awon eleri ijoba wipe Ijoba ni

on lo sise fun, ki ise enyin.

Nwon ti odesletarin na ni ipako lo wo'nu oko, dudu' (Black Maria).

TO CLEAR

*Gents Suede Court Shoe
Brown, Black & Grey
Before 50/- Now 42/6*

Obtainable at:-
A. B. AKINYEMI
10A Maloney Bridge
LAGOS.

Egbe Alafowo-sowopo S'owo Nda Bira

Egbe ti o je egbe ti o gberu ju lo ni ile ijoba ti iwq - orun fe bere lati san ere fun omogbe ati onibara won. Eyiye je akansa pataki kini ti a se ifilo re lati owo egbe ni S. O. Kalejaiye, Adele alakoso ibi ise onisowo yi. Ogbeni Kalejaiye se irohin ipade odo-dun ati ipinnu ipade yi lati san ere egba lori oye meria fun omogbe ati onibara fun oja ti enitokan ra'larin October 1, 1955 titi di March 31, 1956.

Awon ti ko ba ti di omogbe tara sugbon ti o je onibara lakoko na yio gba idaji owo ti akede re. Ogbeni Kalejaiye tannu pe iye owo ti yio jade l'apo egbe yio fere to egba poun. A o se ipinnu ere yi bi o ti to ati bi o ti ye l'ori oja ti olukuku ra ni ile isowo agbegbe re.

Ifilo ti Ogbeni Kalejaiye se tokasi siwaju pe akansa pataki ni eyi je fun idagbasoke egbe ni orile ede enia dudu ati pe nipa be egbe yi yio tunbo fi idi mule si i. Lai se aniani enia dudu le jumq se ise po tokankokan fun oja ati oja orile ede won.

Onibara ati omogbe onisowo afowo-sowopo lo se iwadi nipa gbigba ere lati ile isowo afowo-sowopo ti agbegbe re.

A te irohin yi si oju ewe keje Iwe Irohin wa ose yi ni ede Oyinbo pelu aworan awon ogunna gbomgbo inu egbe na.

Arogundade Npa'le Ogun Mo Orisa Maje Kotenu Mi B!

Rogbodiyan oro Ito-odo ti a npe ni Suesi ni ilu Egypt se ndo gongo nisisiyi-awon ilu alagbara ngbero lati f'ake ko'ri. Oro na wadabi owe Yoruba to so bayi:-

"Onihun nfa, Ota nfa, Onihun ko ju sile beal Ota ko ju sile."

Gbogbo aporo ti awon Ijoba mejidinlogun ranse lo ba Alakoso ijoba Egypt lati so to ki oro le pari ni itubi-nubi ti awon Egun ape ni iyekan, dabi eyiti ko bosi, nitoripe oro ko ni aforiti ninu gbogbo ipade ti awon Iko na se pelu Ogbeni Nasser, ti ise Alakoso Ijoba ilu Egypt.

Ilu awon Oyinbo Gesi ati ti awon Faraase so wipe okunkun ti yio ba se idiwq fun adahun ti awon tise, ni awon yio ba kan'le. Ogbeni Nasser ewe duro lori wipe bi a ba fi agbo fun Egungun, nse ni a ju okun re siye. Awon ko le di ominira tan ki ilu kan tun ma ba won so eto ohun jal awon, Ito-Odo Suesi, ajogunba awon ni ise.

IJA KAN MBQ...

Awon ilu alagba wonyi ti bere si ko omogun won je, nwon si nse ipalcmo silq fun ojo ti agan yio be larin won. Adura tiwa ni ki Olorun Olo-dunmare, Oba arinurade, olumogkan, mase jeki ari ogun meamin ase.

Awon Oba mejl Pegede!

Irohin kan wa wipe awon Oba mejl, Oba Alara ti ilu Ibara, Oloye Bakare Qnabade ati Abowa ti ilu Agbowa, Oloye Edward Okunye Olufewa ni Ijoba Iwo-Orun yan si Igbimo awon Qoa ni ilu Ibadan.

Kabiyesi o, Oloye Abowa tiwa, Ade ape l'ori, Bata ape lese o.

THE NATIONAL BANK Of Nigeria Limited.

Ile Ifi Owo pamqsi yi

Nfi ona owo han enl

Bi o ba fe je onisowo pataki so

ran o lowo nipa wipe ao to o

si Ona ti o dara, ao la oju re

si Ona owo lati ilu Okere wa

Bakanna si ni a tun npe iranlowo fun

gbogbo oja ile wa ti anta si agbalye.

ILE ISE WA NI EKO :-

37, Marina Street, P. O. Box 508, Lagos.

AWON ASOJU WA NILU QBANIIYI :-

The National Provincial Bank (Overseas Branch)

1, Princess Street, London E. C. 2.

The Comptoir National Descompte, De Paris.

8/13, King Williams Street, London E. C. 4.



Oku kan d koto oku miran.

EBUTE-MEITA. Ohun iyanu ko nitan silu Eko, Ohun iyanu na fi silu nite oku ti Ebu-te-Meita nitosi Sango ti a npe ni Apena.

Awon enikan gbe oku kan wa sin, nwon si ti ra ile ibiti nwon nfe sin oku na si, nigbati eniti nwon titori re ra ile ku, nwon ba oku miran ninu iboji won.

Enit' nwon ti sin sinu iboji na nje oruko kanna pelu eniti os se ku yi Samosamo, nwon se asise lati omu Town Council ni. Nwon ni ki awon ti enia won se se ku wa lo sin oku ti won si iboji ti nwon ti se silu fun eniti awon se se sia. Awon oloku na ko, nwon nwon wipe, ayafi bi nwon ba gbe oku na kuro fun awon.

Awon omu oloku kini taku, ekeji taku, kilao ha ti se? nwon ti sin oku na sibẹ to odun meji. Nigbehin nwon ni lati hu oku ti ati sin lojo pipe na kuro fun

cyiti o se se ku, bayi ni awon oku na ba paro iboji, ni saki-saki ba dadi. Sagbon ebi kanna ni awon mejeji.

Ko Si Ara Nilu Ale

ALE. Lojo kan, alufa ara ilorin kan lo se wasi ni ilu kan ti a npe ni Ale, bi o ti nsojo lo o wipe "E fi eti nyin silu enyin ara ilu Ale nitofu enyin ni mo nfe ba sojo loni.

Lesekanna ni Balu ilu Ale didi, o ni ki a so fun alufa na wipe, ko si ara nilu Ale ninin, ghogbo wa ti a mbe ninin omu Ale nigbogbo wa.

Eyin okawe wa, eko ha roju siyo lode bi o? Bi a ba pe enikan ni omu Ale ni ile Yoruba yio ma binu, enia ni awon enia nwon yi o nyangan wipe omu Ale ni won yi.

Won da Oloye meji duro

OYO Awon ijaye pataki meji ni a gbo irohin wipe awon da duro nigbati awon Igbimọ ibile ilu Oyo se ipade.

A gbo wipe Alafin tuntun lo kowe range si Igbimọ wipe idaduro loye awon Oloye meji na ki alafia le wa nilu Oyo, nitoripe nwon ko se dede pelu on.

Igbimọ tun pa'nupọ pe ki a da owo osu won duro, ki awon mase lo si Kotu ibile mo pelu.

No.128.

Carter Bridge Damaged

During the early hours of Thursday, September 6th, a number of heavy barges in Lagos Harbour broke adrift and were carried by the current against Carter Bridge with great violence.

Some of the steel piers which support the Bridge have been seriously damaged and the Director of Public Works has ordered the reduction of speed of traffic to 20 miles an hour. It has also been necessary to reduce the effective width of the bridge at the place where it is damaged.

Arrangements have already been made with Messrs Dorman Long & Co Ltd., the contractors who built the new Cross River Bridge, for the replacement of corroded steelwork in Carter Bridge, and they will also be asked to undertake the repairs now required. The work will be begun before the end of the year.

IRIN AJO

Eniken! ti o ba se rin irin ajo, yala lenu ise tabi fun fawo lo si ibikibi ni apa ile Nigeria, tabi lo si apa ile Iwo-orun Afrika tabi lo si ibikibi kakiri agbajaye.

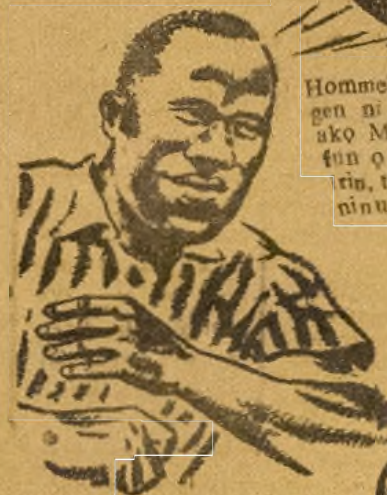
Ma bere Lodu: AMQNA irin ajo yala lori O mi, l'ofurufu tabi lori ile ninu oku Reluwe.

Jeki a ba o se ghogbo wahala re nipa Iwo Aso fun irin ajo (Passports) Iwo Oko-ile (Tickets) eyo ijoko si ati ifokanbalu jamba (Insurance).

Ac ba ero Meka seto oku pelu iroran. Iranje ni a je fun o, lo wa.

West African Travel Agency Coy.,
9, VICTORIA STREET, BOX 581, PHONE 23237 LAGOS

Fun agbara Ise ati Ere Sise



Hommel's Haematogen ni agbara eje ako Malu, o si le fun o l'agbara birin, ti o le fi gb'ori ninu ere idaraya



Fun agbara ise l'osan ati lera lehin ise ati Ere Sise

MA LO Egiogi ... **HOMMEL'S**

HÆMATOGEN

O mbe ninu l'oro fun titi kakiri Soju Nigeria ati l'odo Asoju wa:—

Alban Pharmacy Ltd. 2, Victoria Street,
P. O. BOX 461
Lagos—Nigeria.

Iwadi Nipa (ro Banki Azikiwe

ESE AWO PE

Ese awon ogbonkangi agbejoro lati ilu Oyinbo lo pe nile ojo yi, ati awon aworoṣaṣa loya enia dudu, iwonyi ni awon Loya to wa lati ilu Oyinbo:- Ogbeni Soskice, Shawcross, Tudor Davies, Mackenna Q. C. Awon ti ile wa ni wonyi:- Ogbeni Lawson, Ibekwe, Benson, Lambo, Fani Kayode, Udoma, Coker, Emejulu Olowofoyeku, Akinyede Fakayode, Ita, Ogunsanya.

Keke Omolanke kan lo ko eru lwe ofin wa fun awon adajo meteta to ngbo idi oro ojo yi.

Lojo keji ti o nse ojo 4th oṣu August eniti awon keke pe wa rojo so ti enu re ni, Ogbeni Blankson ti o nse omolajo Ogbeni Azikiwe.

ORO OGBENI BLANKSON

Ogbeni Adolphus kofi Blankson ti o nse Olotu Continental Bank ati ile ise Azikiwe soru niwaju adajo meta wipe, Dokita Azikiwe ti se ikilo fun on wipe ki on mase tun ba on soru nipa ohunkohun ti o le sele ni Banki mo, nigbati on lo ba ninu ile re, O si paṣe fun on wipe ki on jade kuro ninu ile on.

Ogbeni Mackenna bere wipe nje o tun ba a soru nipa Pilot pelu?

Blanks - Rara, agbede.
Mack-nje otito ni eyi ti o so yi bi?

Blanks - otito ni, Nigbana ni Mackenna se lwe kan jade, eyiti Ogbeni Blankson ko si enikan ti a npe ni Clarke nibi ise Pilot. Nwon so sinu iwe na pe iru iwe na kan ni lati lo sode Azikiwe. Mackenna mbere lojo Blankson kint eyin nilati se ribe.

Ogbeni Blankson dahun pe, lasiko na, os ni lja kan pelu ogbeni Clerk ti on si fe ki Azikiwe gbo nipa re. mo kan fi hale wipe ngo si eda iwe na ranse si Azikiwe ni, sugbon nko se be rara.

Mackenna bere wipe, nje, lotito ni e ma nje abo ohun ti e so fun Azikiwe gebebi e ti ma nse tele-tele? Blankson dahun pe, mo ti so fun o pe nse ni mo nfi eyini hale mo Ogbeni Clarke. Mackenna so wipe, nje lo ni o pa sinu iwe ti o po tobe? Blankson wipe nko je fi ranse si Azikiwe, mo kan fi hale lasan ni.

Kinise ti iwo Blankson se so fun awon egbe Finance Corporation wipe ki awon wa ni owo ninu owo Continental Bank ni oju owo? Eni ko mo ohun kan nipa eyiti o wi yi.

Blankson so wipe lakoko ti on gbo wipe on pelu Ogbeni Mbanugo yio lo si ilu Oba lati lo gba owo wa lojo awon igbimo Marketing & Export, nigbati awon mbe ninu igbimo Finance Corporation, ninu oju

May 1955, Nigbehin ti oro gbe so, o yi oro re pada wipe ko nso ni ipade Finance Corporation ni on koko gbo oro na, on ranti pe Ogbeni Mbanugo lo koko fi oro na ko on loju lori oro isoro.

Ogbeni Mackenna tun bere pe, owo ti awon Finance Corporation fi si Continental Bank kini nwon si owo nase larin odun 31st oṣu March 1955 si 31st oṣu March 1956 ti owo ti ile ise Azikiwe ya bi awon egbaa le l'oke masun (£112,000) di eyiti o le ni Oke mejo pelu (abo £170, 596.) kini Ogbeni Blankson ti so si eyi, Lohinti Ogbeni Blankson pari ojo riro tire, Dokita Mbanugo ni oro tun kan.

ABO ILU OYINBO RE O!

Okunrin Aguda kan laipe yi ninu odun 1953 ran omo re lo silu Oba lati ko ise Alufa. Nigbati o de ohun obinrin lo bere si fi owo baba re ko kakiri. O kowe si baba re pe on ti yege ninu idanwo Latin pelu iyi ati eye.

Nigbati o di 1956 ninu oṣu June ni omo na ba oko Apapa gunle si Eko, Inu baba re dua wipe omo on yege ninu idanwo Latin pelu iyi ati eye.

Baba yi se ase repete, o pe ipade awon enia nlanla sibi ase yi, awon Loya wa nibe, Dokita Professor, awon Bishop ati awon Alufa Soṣi wa nibe. Nwon je ase na, inu won si dun.

Baba Aguda yi wa so fun gbogbo ijoko na pe, enia ko le fi owo ra eyi, ki o ma ko ni loju. On fe dan oko omo on wo. O wa lo duro lodikeji tabiti onje o wipe:-

Omo mi, a ti gburo re ni ilu oba pe nse lo yege ninu ekọ Latin, o wa gbe sibi s'ke, o wipe, omo mi kini eruko ti a npe eyi ni ede Latin? Omo na si dahun re Spoon-abus, Oturke? Knife a bus Cup yi nko? Cup-bus, Gogbo enia ho sece, awon patewo, Inu bi baba re o si wipe, bi o ba je pe gbogbo Latia lo pari si Abus, lo mu ada nile, ki o gbona oko mi l'Agge lo joko si. Lo ba fiolnu kuro nibe. Gbogbo enia tun ho gee e.

Okunrin kan pa eja Abami

AROSUKU. Okunrin Apeja kan silu yi lo fi obiriki re pa eja abami lojo kan ninu oṣe yi. Bi eja na ti ri niyi.

Egbe kan eja na ninu gegebi ti awon cranmi, egbe keji si ni pe lara gegebi ti eja.

Ni ejika re ni ohun kan bi atelewo yo, ko ni apa, sugbon o ni ikamarun,

ohun kan si tun yo gegebi ese pelu ika. Gba fi geranwo nirebogbo enia ti eja abami yi se eniti ko le rie, ni ki a gee on.

Lesekese irohin ti lo kakiri nipa eja abami yi, awon ero wa lati Aba, Uwakoli, Pot-kotu Deṣam, Owerri, Onitsha Enugu Nsuka ati ilu miran ti a ko le deruko.

kili a ti mo itunmo eja abami yi si? Olorun ko ṣowa.

IMORAN FUN ENYIN ABIYAMO

Enyin abiyamo ewa ra OMORELA o dara pupo fun awon omode. Ama je ki omode ri orun sun daradara o dara fun otutu, iko ati orisirisi arun miran ti o ma mba omode ja ni asiko ehin. Opolo po abiyamo lo ti lo egbogi yi fun omo won ti won si so wipe odara pupo fun awon omode

OMORELA BABY MIXTURE
(SILE MEJI ABO 3IG. FUN IGO KAN)
O wa Lojo 1-
COMMERCIAL MEDICINE STORES
(Qualified Chemist)
10, VICTORIA STREET, LAGOS



Ile-ise ti Ibaṣbe Ipinle Iwo-orun ti emojuto eto Ibaṣbe Alafia ena gbe meji abo pkan lodun kan fun ilajo awon asunna ati ipata omo to huwa atọ kakiri, a si ma pari edekoyede bari gbi, o si ile ilajo fun awon omode, o si nse igbonwo fun egbe awon odomokunrin ati odomobirin so po so egbaji enia. O nse eto kiko awon odo ati agba ni ile asaju ati ile ajumose fun idagbasoke Iba.

Ile-ise Alafia Ibaṣbe Ipinle Iwo-orun ni Ibadan l'o se ikede yi.

ELETI OFE

A-NUU-WON KO SE WI LEJO
EDITORIAL OFFICE & WORKS CABLES & TELEGRAMS

25, Keako Street, Lagos
P. O. Box 467

"ELETI - OFE LAGOS"
Phone 23370

VOL. VIII, NO. 485, LAGOS, SATURDAY SEPT. 15, 1956.

Egbe Onisowo Coop Nse Bebe!

Aka se hen! ni Iwe Ikede sadagba-gadagba to jade ninu oju yi, ti a won egbe alafowo-sowope s'owo ti a npe ni Cooperative Supply Association Limited, le mo orinrigunni yika lu wa, fun ki awon enia le rika daradara-ki won le wa gba ebun owo lori oja ti olukuluku ba ra nile ita'ja won lati oju k'ni oju October, ti odun 1955 titi di oju kokanlelogbon oju March, ti odun 1956 yi.

Gegebi a ti gbo oye na ni wipe awon Olotu egbe isowo yi pelu ipade gbogbo-gbo ti ajodun ti awon egbe na se gegebi ati se si spakan Iwe Irohin wa oye yi ni ede Gyinbo ni awon ti Fohunokan wipe gbogbo awon ti o je omo-egbe ti o si ra oja ni S'obu egbe, yio gba Sisi (6d) lori oja Poun kokan ti won ra.

Ekeji ni awon onibara ti won ki ise omo-egbe, yio gba idaji owo ti omo-egbe gba lori oja poun kokan ti awon na ba ra ni S'obu ebe lati ibere oju October, 1955 da ipari oju March, 1956.

Eyi je ohun pataki ti ako ri iru re ri nile wa nihin, o si ni lati je eni'ni l'aju o fi han godegbe wipe ere jije lori oja ti awon egbe (Coop) yi ata ko ni awon egbe na nwa bikoje anfani ati irun fun enia Nigeria, pataki fun awa enia apa Iwo-Orun ohin.

QPQLQ WO IBITI O TUTU BASI

A ro wipe a ko ni siso bi a ba wipe ohun ti o dara ju ni ki awon enia wa gharuku ti egbe rero yi lehin, nipa rira oja nira ile ita'ja won (Shop) nitoripe bi o ba ra oja ti o to poun kan [£1] pere larin oju mefa, awon egbe na yio fun o ni ebun owo lori oja ti o ra na, ki a ma sese so wipe bi o ba ra oja olowo pupo.

Nitorina, a fi wosika wa oye yi kesi enyin okawe wa wipe awon egbe alafowo-sowope s'owo nsehun ara, nwon npe bebe! e ma ra oja yin nile ita'ja Coop ki e leri ebun owo gba lori oja ti eba ra.

Eyi jo'nia l'aju o.

ABOKI



JE AWOGBARUN to LOKIKI KA ILE ENIA DUDU. AJEBIDAN ni fun IKO, LAKUREGBE, IWORA, AKOKORO, SOBIA, AKANDUN, JEDIJEDI, etc.

KOSEPEKU ni GBO-GBONSE yi je fun GBOGBO ILE nitorina RA IGO kan LONI Lodep-

IBUKUN - OLU MEDICINE STORES,

Amunigun Street, Box 245, Phone 189x, IBADAN

E 21, Sabongeri, ZARIA, X 5, Central Market, Box 2205,

Kumasi, Gold Coast.

Mo Gbadun Siga Pirate



PIRATE Ni Siga To Dara

No. 73/S.2/VOL. VII/259.

Ministry of Finance: Western Region

VACANCY FOR ONE SENIOR STATISTICIAN

Applications are invited from suitably qualified Candidates for appointment as Senior Statistician in the Ministry of Finance, Western Region of Nigeria.

Scale of Salary:- The Salary is in Scale A.

Upper Segment: £1,188 x 48 - 1,380 p.a.

For full particulars see Western Regional Notice No. 711 in Western Region Gazette No. 44 of 30th August, 1956.

Closing date 30th September, 1956.

A NTA

Iwe Adura Akanjo ati Asere ile siye	1/-6
Iwe Aniyari Iran ati Nofila esu Awe	6d
Kurari esu kan l'ede Yoruba	1/-6
Iwe Esan Kogbogun	2/-6

E kowe si:-

ESAN KOGBOGUN SERVICE

8 Idumagbo Avenue
Lagos Nigeria

Ofin kotemiloron lori oye ije ti a se ni odun 1956 ni ijoba iwo orun mu jade laipe yi.

Ofin na le bayi wipe, bi a ba zi enkan tabi idile kan ti ko ni inu didan si oye kan ti awon je, oluwa re ni eto lati se iwo wa wipe ije oye na to te on lorun ko si ladi rekiniye ti ko fi te on lorun.

Eniti o mbe lori oye na yio san Pound mewa lati fi se iwe kotemi lorun tire, bi o ba je wipe Alaga igbimo ni ijoye na, yio san poun marun sugbon bi o ba je wipe ijoye Ede kan, ti o mbe sinu igbimo sa ni oluwa re, yio san Poun mejl.

Eniti o nse oloru ijoba ibile ni kan lo ni eto lati se ayipada nipa owo kotemiloron gese ti elejo na ba ti talaka to.

Ki o to to ojo meje lehin eyi, Asoju ijoba ibile yio ti pari iwe ejo na yio si ti fi ranse si iye eniti ejo na ba kan, nigbati nwon ba ti gba iwe na tan, kiakia ki o to to ojo meje, awon elejo ti a fun ni iwe ni lati ro ejo tire sinu iwe lona meta, yio fi ranse si asoju ijoba ibile, Asoju na bi o ba ti gba iwe yi, yio soto

GOMINA IWO-ORUN



Sir JOHN RANKINE

re yio si fi ranse si Gomina ki o to to ojo meje.

Nigbana Gomina yio yan eniti o ba fe lati joko lori ejo na ki o si mu idajo re wa

fun on. Ninu iwe ti a ti getele fun iwu ejo be ni a ni

lati ko ejo na si, ki elejo na si fowol.

No. 73/S.2/VOL VII/ 261
**Elections (House of Representatives)
 (Western Region) Regulations, 1954.
 Appointment of date for Bye-Election
 Ibadan South Electoral District**

It is hereby notified for general information that in exercise of the powers conferred upon me by regulation 12 of Elections (House of Representatives) (Western Region) Regulations, 1954, I have appointed the following dates for the holding of the bye-election of the Representative Member for the Ibadan South Electoral District.

- (a) 14th September: date by which the preliminary list is to be published.
 (b) 21st September: date by which claims for inclusion in such list or objections to the inclusion of any name in such list, shall be made.
 (c) 29th September: date by which such list shall be finally settled.
 (d) 10th October: the last day for the making of nominations, which must be made before one o'clock in the afternoon of this day.
 (e) 20th October: the date on which the bye-election is to be held.

2. The Divisional Office, Agodi, Ibadan shall be the place for the making of nominations.

(Sgd.) D. HOWARD
 Chief Electoral Officer
 Ibadan Province.

LAGOS RACE CLUB OCTOBER MEETING

Saturdays 22nd and 29th September, 6th and 13th October, 1956.

FIRST DAY

RACE No.	Handicap	START
RACE No. 1	Six Furlongs Handicap Bottom Division	3.00 p.m.
RACE No. 2	Six Furlongs Handicap Bottom Division	3.35 p.m.
RACE No. 3	Five Furlongs Handicap Middle Division	4.10 p.m.
RACE No. 4	Five Furlongs Handicap Middle Division	4.45 p.m.
RACE No. 5	Five Furlongs Handicap Middle Division	5.20 p.m.
RACE No. 6	Five Furlongs Handicap Middle Division	5.55 p.m.
RACE No. 7	Eight Furlongs Handicap Top Division	6.30 p.m.

SECOND DAY

RACE No. 8	Seven Furlongs Handicap Bottom Division	3.00 p.m.
RACE No. 9	Seven Furlongs Handicap Bottom Division	3.35 p.m.
RACE No. 10	Ten Furlongs Handicap Middle Division	4.10 p.m.
RACE No. 11	Ten Furlongs Handicap Middle Division	4.45 p.m.
RACE No. 12	Ten Furlongs Handicap Middle Division	5.20 p.m.
RACE No. 13	Five Furlongs Handicap Top Division	5.55 p.m.
RACE No. 14	Five Furlongs Handicap Top Division	6.30 p.m.

THIRD DAY

RACE No.	Handicap	START
RACE No. 15	Nine Furlongs Handicap Bottom Division	3.00 p.m.
RACE No. 16	Six Furlongs Handicap Middle Division	3.35 p.m.
RACE No. 17	Six Furlongs Handicap Middle Division	4.10 p.m.
RACE No. 18	Six Furlongs Handicap Middle Division	4.45 p.m.
RACE No. 19	Six Furlongs Handicap Middle Division	5.20 p.m.
RACE No. 20	Seven Furlongs Handicap Top Division	5.55 p.m.
RACE No. 21	Seven Furlongs Handicap Top Division	6.30 p.m.

FOURTH DAY

RACE No. 22	Four Furlongs Handicap Bottom Division	3.00 p.m.
RACE No. 23	Four Furlongs Handicap Bottom Division	3.35 p.m.
RACE No. 24	Seven Furlongs Handicap Middle Division	4.10 p.m.
RACE No. 25	Seven Furlongs Handicap Middle Division	4.45 p.m.
RACE No. 26	Seven Furlongs Handicap Middle Division	5.20 p.m.
RACE No. 27	Polo Scurry	5.55 p.m.
RACE No. 28	VICE-CHAIRMAN'S PRIZE 16 Furlongs Handicap Top Division	6.30 p.m.

**Iyato to o mbe ni-
nu Bibeli ati
Koran**

(Lati owo Lemona Ajakuta)

Oso meji ni pataki ti mo fe si ha gysin okawe wa ni eyiti Al korani fi yatọ si Bibeli. Ekinni, Testamenti ti lasil je chun ti o sele nigbati awon ti o se okan na mbe laise, Bakanna ti Testamenti titun. Sugbon niti oru inu Alkoran, Anobi Mohamed lo pape pe ki a ma ko o sile gbogbo oru ti Olorun ba baso ti enikan ko gbo, sya fi os nikan. Eyi si ni wipe gbogbo oru inu Koran lati enu Olorun lati gbo wa ko sile, nitori Mohamed, (Ike ati ipe ko ma ba a) korii de aye ni asiko Jobu.

Gbogbo wa lo ti ka iwe itan Jobu ninu Bibeli, sugbon mo fe tun so fun nyin gagebi Olorun ti pitan re fun Mohamed, mo si ni igbagbo pe eyiti Oloso yep ni sbe ge.

Ara ilu Romu ni Anobi Ayuba, oruko baba re ni Hiso omo Isiaka, okan ni nu awon omo Lotu ni iya re. Iyawo re kan ti o nje Rahamotu bimo mejila fun Ayuba, elomiran bimo fun pelu. Awon omokunrin mejo obinrin je mefa.

Ayuba je oninure, a si ma se itore fun awon alaini ati awon Omo orukan o shi gbogbo ara ati ohun ini josi inu fun Olorun. Iru iwa yi mu ki Egu korira re. Ejo kan ti Egu lo si orun. Olorun bere pe kilo tiri Anobi Ayuba si? Egu dahun pe, Ayuba ko le se ki o ma si o nigbati o ti fun ni ohun gbogbo terun, ki Olorun fun on laye lati dawo nira igbagbo re. Olorun si fun laye.

Egu lo, gbogbo ohun oko re jaba. Egu tun lo rasu gbegbo omo re lekansoro sbe Ayuba esin Olorun, Olorun tun fun Egu laye lai fi amodi dan Ayuba wo. Amodi na ba Ayuba ja fun odun meje. Sabesibe Ayuba ko fi esin Olorun sile.

Nigbati Egu se Iwo kan abon re, ki o ni se le pe Olorun mo, nigbana ni Ayuba ke re Olorun bayi pe: Ha! Olorun inira fi

owo kan ni. Iwo lo si nke gbogbo eni, kemi Olorun. Lesokanna, Olorun ran Anjeli Gabriel lo sogba Alijanna lo mu eso Mongoro o fi fun Anobi Ayuba je, o si bere si ri alafia lati gba na wa. Anjeli na so fun pe ki o di de, o si dide duro. on pelu anjeli na rin bi iwon eso mejila nwon duro. Ageli na tun so fun pe ki o fi ese osi lule. Bi o ti se be ta n beni omigbona tu jade lati inu ile wa. Anjeli na tun so fun pe ki o fi ese keji lule be, bi o ti se be tan omi tutu tu jade lati inu ile.

Anjeli Gabriel so fun pe, ki o fi omigbona we, ki o si mu lara omiatu. Bi o ti se be tan. Olorun si dagbogbo ewa re pada. O si tun bere si sin Olorun gbogbo ohun ti o ti lo lowo re ni Olorun da pada ni ilop meji-meji. Nje iyato ko ha wa ninu ti Bibeli ati ti Alkoran?

**Ijoba Iwo Orun
Fe Ma Hun'so**

IWO. Irohin ta si wa leti wipe Ogbeni S. A. Tinubu ba awon ara ilu Iwo so wipe Ijoba ile Yoruba yio da ise aso lihun sile ni agbegbe Odo Oshun.

O so fun awon enia na wipe ki nwon to bere ise na nwon o gba owu lopolopo, nitorina, nwon ni ki awon agbe mura lati ma fi ogbin owu se ise se.

Ati wipe nigbati eru na bade iye awon enia ti so gba sibi ise na yio fere le ni edegberin enia. Nwon o ma hun orisirisi eso nje.

Kere o!

A ti ni orisirisi ogun Germany to sese de, fun oniruru aisan to unri tobinrin. Tete wa ra tire ko to tan.

**J. A. AJAO
BROTHERS**

MEDICINE STORES

7, Egerton Road, Lagos

IMPORTANT IMPORTANT IMPORTANT

To all Members and Patrons of the Cooperative Supply Association Limited.

In accordance with the decision of the Board of Management and the annual General Meeting, a Dividend will be paid to Members and Patrons of the Cooperative Supply Association Limited based on their patronage of Cooperative Shops and Branches during the period from October 1, 1955 through March 31, 1956.

Apply to your nearest Cooperative Supply Association Limited Shop or Branch for details.

**YOUR
ENGINE
MAY BE MORE
POWERFUL
THAN YOU THINK!**

I.C.A. UNLOCKS ALL THE POWER IN YOUR ENGINE.

Only



has



THE MOST POWERFUL MOTOR SPIRIT YOU CAN BUY

IRORA LAKUREGBE

Iwosan Re Niyi

Bi enia ba nfe gba ara re kuro ninu irora Lakuregbe o dara ki eluwa re wa iwosan ti o dara nigbati ldogi ara ko ba ri nyo jade yio go lidalowoko fun kindirin nbi Olo-lau lati nise re dedee nipa be a ni lati fi egbogi ran lowo ki o ba le sise daradara Egbogi DE WITT lo dara fun lilo.

Awon egbogi na dara o si nfo isu enia mo, nipa jiski Kindirin sise daradara tobe laipe zingbo ara yio pada be sipo kiskis, egbogi DE WITT'S gbogbo aghaye lo ti nlo o, o si ti sise iwosan fun epolopo enia to be ti awon ke iwo dupe lowo wa nitoro egbogi na ti o gba won kuro ninu irora Lakuregbe, Epe ti o fi alara lati danwo fun arun tire? Lora ni sobu ibiti nwon nta egbogi Egbogi De WITT'S yi a se nipstaki:

ARUN GHEINGEHIN ARUN IGBAROKO ARUNGUN IWORA ati LAKUREGBE

Ohun ti o dawa loju ni wipe egbogi DE WITT'S je eyiti a se tonitoni ti a si fi egbogi atata se,



Coop Society Propose to Pay Dividend to Patrons & Customers.

The largest consumer Cooperative in Western Nigeria is about to pay the first dividend in its history to members and patrons. This was announced to-day by the Acting General Manager of the Cooperative Supply Association Limited, Mr. S.O. Kalejaiye. Mr. Kalejaiye said that as a result of action taken by the Board of Management and the Annual General Meeting, members of the Society will receive a dividend of 6d for every £1, spent with the Cooperative during the period October 1, 1955 through March 31, 1956. Non-members who are patrons of the Cooperative will receive one half of the declared dividend. Mr. Kalejaiye estimated that about £2,000 will be returned to the members and patrons of the Cooperative based on their individual patronage of C.S.A Ltd Shops and Branches.

In making the announcement Mr. Kalejaiye said that this is an historic moment in the development of Consumer Cooperation in Nigeria. He pointed out that by returning profits earned over and above operating expenses to the members and patrons of the Society one of the cardinal principles of Cooperation was being exercised. "This Proves", he said, "that consumer cooperation has come of age in Nigeria, it also proves beyond any doubt that Nigerians can work together, efficiently to solve their economic problems. Patrons and members of the C.S.A. Ltd., can get detail about collecting their dividend from their nearest C.S.A. Ltd Shop or branch.

DE WITT'S PILLS
For Kidney and Bladder Troubles

B'ole dogun K'o Dogun, B'ole Dija K'o Dija

EGYPT Nigbati irokeke ogun gba aiye kan nisisiyi, awon Oniwe irohin lo sode Baba egbe Nassar, pe ewo ni sise nipa irohin ogun ti o gbojikan yi?

Nassar dahun pe, eni-keni ti o ba mo lewa, ti o si yan a run, ti o ba kolu ile Egypt nibikibi larapa ebute Suez, ao ba oluwa re ja, to be ti ddogbo onle e de ti o

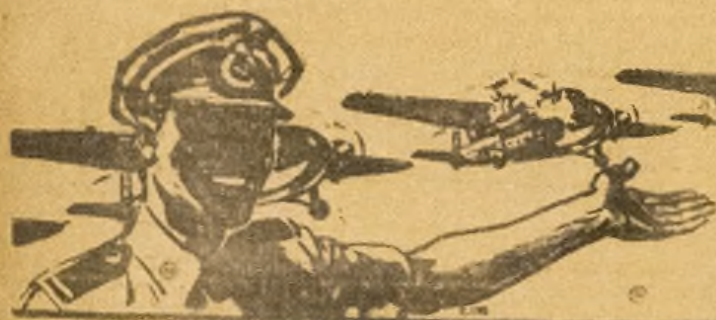
nso ede Larubawa yio gbija, ija na yio si di ti gbogho aiye. Ao be-re lati okun Atlantik so si pari re si okun ile India.

Egypt ko ni ba enikan se ajopin ebute Suez. Awon Oniwe irohin tun bere wipe ewo ni ti awon Faraose ti o nko ogun ti o lgrun?

O dahun wipe B'ole dogun k'odogun b'o le dija eyikeyi ti nwon ba mu wa, ni nwon o ba on mbe. Ojo p'ewe koko, b'ole ya k'o ya.



E. I. Prince (Center), the Registrar for Cooperative Societies, Western Region congratulates the Directors & Management of the Cooperative Supply Association Ltd on their decision to pay a dividend to members & patrons. Mr. S. O. Kalejaiye, Acting General Manager of the C.S.A. Ltd is shown receiving the Registrars' Congratulations. Looking on at the left is Mr. E. B. Beckley, Vice President and a member of the Committee of the Management for Lagos.



you too can fly
CHEAPLY
by **W.A.A.C**



Ijale se hi o ti nse

Kailo se, aye nlo, a nto o. Lasiko kan nigra ti oju awon ara Eko si wa ri dido, ari o si Iko ma ese ehun kan ti awon rpe si Oke-Riro. Awon imale awon ara ese ehun ti a wai bawo ko si mba won see.

Nibati oju edun Ileya ba ku oju meta gbogbo awon orisirisi egbe ti o mbe nilu Eko ni yio dido lati lo ba won ro oko Mosalasi o dun nibiti awon o gbe kirun ni otunle.

Ojo Iroko edun yi, a ma dun wo jolo alitoripe oju na yio dati oju ti awon Eyo Adamu- orisa yio jade.

Olukuluku eza yio mura sarebi igbati o ni ogun yio di onde, tra, ado, oruka, ope ida, ibon mura, yio fi ofun, osun ati edu kan ara re.

Ao ma ba iyoku oju yi bo nighamiran.

Ogun Aran (Ejo Inu)



* ALL THE Worm Expeller je ogun aran fun mode ati egba otunle ti ebun. Ra igo kan lati se gbogbo awon aran buburu ti o nba o janna danu. Bi o ti npa aran, len o npa yin won. Wa ra ire ki o lo tan. Igo kan je 2/6d. Owo-Oko si je 1/-.

THE EGBA TRADING ARADAN STORES, 18, Deasop Bridge Street, P.O. Box 2, Ebute Metta.

A DUPE OJO O!

C. B. J. A. Mosebolato fi warka y dupe gidi lati lo awon ara, Ojo, alu ma ati awon to ra ko an nipa wamba Mope to si se oju re Victoria Abala gbogbolatan rilu Iroko Iqna ilu Fiditi loju 12th oju August, 1956.

Ki Olorun ma je ki a fi iru re san o.



Aworan oke yi niti Ogbeni E. O. Eyo pelu ogbogi ninu ise amofin Ogbeni Christopher Shawcross ti ise agb'ejoro fun ogbogi Eyo nipa iwadi lori BANK AZIKIWE. E wo won, bi Ogbeni Eyo ti ngb'owo - awo pelu Loya re t'erin - t'erin.

Yala Basikulu-elese lo nfe ni tabi elero - Alupupu

PHILLIPS THE NEW DIDARAJULO nipa NGIBI.

BASIKULU ni PHILLIPS "GADABOUT" nipa Alupupu.

RENNED THE WORLD OVER

PHILLIPS BICYCLES

Ibikibi ti ami olokiki KINIUM-FILLIPI ba wa o je ifowosaya fun 'AGBARA alafegbe ati ewa ti a fi se ise.

Awon irin-are Basikulu FILLIPI (frames and forks) ni awon akanse ise ti a se sinu won biotilejepe ko han sode nwon fi agbara alope si ibito ye. Iwadi isona to le ni ogota-odun lo fun wa ni igboiya lati wipe KINIUM-FILLIPI ni ylo ma gbori lowo gbogbo won.

SI ILE SE

PHILLIPS CYCLES LIMITED, BIRMINGHAM, ENGLAND
 ZOWO DAKUN NI IWE IROLOWO OJA TI KESE PHILLIPS ATI TI SESE PHILLIPS
 "GADABOUT" * RANGE NI NI
 * EYIN MOO KO BA FE NIJU ANWON KESE HEBI ANWON SI MOO FA BA LE E LORI

ORUKO _____

ADUGBO ILE _____

YEO